

## Product datasheet for **TA359714**

### RBP1 Rabbit Polyclonal Antibody

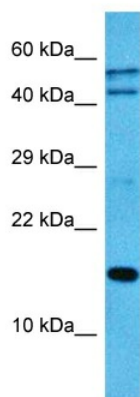
#### Product data:

Product Type:	Primary Antibodies
Applications:	WB
Reactivity:	Human
Host:	Rabbit
Clonality:	Polyclonal
Immunogen:	The immunogen is a synthetic peptide directed towards the middle region of human RBP1
Specificity:	<b>Expected reactivity:</b> Human
Formulation:	Liquid. Purified antibody supplied in 1x PBS buffer with 0.09% (w/v) sodium azide and 2% sucrose. <i>Note that this product is shipped as lyophilized powder to China customers.</i>
Concentration:	lot specific
Purification:	Affinity purified
Conjugation:	Unconjugated
Storage:	For short term use, store at 2-8°C up to 1 week. For long term storage, store at -20°C in small aliquots to prevent freeze-thaw cycles.
Stability:	Shelf life: one year from despatch.
Predicted Protein Size:	15 kDa
Gene Name:	retinol binding protein 1
Database Link:	<a href="#">NP_001124464.1</a> <a href="#">Entrez Gene 5947 Human</a> <a href="#">P09455</a>
Background:	This gene encodes the carrier protein involved in the transport of retinol (vitamin A alcohol) from the liver storage site to peripheral tissue. Vitamin A is a fat-soluble vitamin necessary for growth, reproduction, differentiation of epithelial tissues, and vision. Multiple transcript variants encoding different isoforms have been found for this gene.
Synonyms:	C; CRABP-I; CRBP; CRBP-I; CRBP1; CRBPI; RBPC



[View online »](#)

## Product images:



Host: Rabbit  
Target Name: RBP1  
Sample Type: OVCAR-3 Cell Lysate  
Antibody Dilution: 1.0 $\mu$ g/ml

Host: Rabbit  
Target Name: RBP1  
Sample Tissue: Human OVCAR-3 Whole Cell  
lysates  
Antibody Dilution: 1 ug/ml