

Product datasheet for **TA359707**

PLAGL1 Rabbit Polyclonal Antibody

Product data:

Product Type:	Primary Antibodies
Applications:	WB
Reactivity:	Human
Host:	Rabbit
Clonality:	Polyclonal
Immunogen:	The immunogen is a synthetic peptide directed towards the middle region of human PLAGL1
Specificity:	Expected reactivity: Human
Formulation:	Liquid. Purified antibody supplied in 1x PBS buffer with 0.09% (w/v) sodium azide and 2% sucrose.
Concentration:	lot specific
Purification:	Affinity purified
Conjugation:	Unconjugated
Storage:	For short term use, store at 2-8°C up to 1 week. For long term storage, store at -20°C in small aliquots to prevent freeze-thaw cycles.
Stability:	Shelf life: one year from despatch.
Predicted Protein Size:	45 kDa
Gene Name:	PLAG1 like zinc finger 1
Database Link:	NP_001074420.1 Entrez Gene 5325 Human Q9UM63-2
Background:	This gene encodes a C2H2 zinc finger protein that functions as a suppressor of cell growth. This gene is often deleted or methylated and silenced in cancer cells. In addition, overexpression of this gene during fetal development is thought to be the causal factor for transient neonatal diabetes mellitus (TNDM). Alternative splicing and the use of alternative promoters results in multiple transcript variants encoding two different protein isoforms. The P1 downstream promoter of this gene is imprinted, with preferential expression from the paternal allele in many tissues.

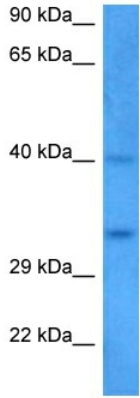


[View online »](#)

Synonyms: DKFZp781P1017; LOT-1; LOT1; MGC126275; MGC126276; OTTHUMP00000017344; OTTHUMP00000017345; OTTHUMP00000017346; OTTHUMP00000017347; ZAC; ZAC1

Protein Families: Transcription Factors

Product images:



Host: Rabbit
Target Name: PLAGL1
Sample Type: A549 Cell Lysate
Antibody Dilution: 1.0µg/ml

Host: Rabbit
Target Name: PLAGL1
Sample Tissue: Human A549 Whole Cell lysates
Antibody Dilution: 1ug/ml