

Product datasheet for TA359702

PDE8B Rabbit Polyclonal Antibody

Product data:

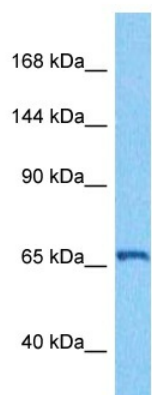
Product Type:	Primary Antibodies
Applications:	WB
Reactivity:	Human
Host:	Rabbit
Clonality:	Polyclonal
Immunogen:	The immunogen is a synthetic peptide directed towards the middle region of human PDE8B
Specificity:	Expected reactivity: Human
Formulation:	Liquid. Purified antibody supplied in 1x PBS buffer with 0.09% (w/v) sodium azide and 2% sucrose. <i>Note that this product is shipped as lyophilized powder to China customers.</i>
Concentration:	lot specific
Purification:	Affinity purified
Conjugation:	Unconjugated
Storage:	For short term use, store at 2-8°C up to 1 week. For long term storage, store at -20°C in small aliquots to prevent freeze-thaw cycles.
Stability:	Shelf life: one year from despatch.
Predicted Protein Size:	64 kDa
Gene Name:	phosphodiesterase 8B
Database Link:	NP_001025022.1 Entrez Gene 8622 Human B3KN77
Background:	The protein encoded by this gene is a cyclic nucleotide phosphodiesterase (PDE) that catalyzes the hydrolysis of the second messenger cAMP. The encoded protein, which does not hydrolyze cGMP, is resistant to several PDE inhibitors. Defects in this gene are a cause of autosomal dominant striatal degeneration (ADSD). Several transcript variants encoding different isoforms have been found for this gene.
Synonyms:	FLJ11212; HsPDE8B; PPNAD3
Protein Families:	Druggable Genome



[View online »](#)

Protein Pathways: Progesterone-mediated oocyte maturation, Purine metabolism

Product images:



Host: Rabbit
Target Name: PDE8B
Sample Type: MDA-MB-435S Cell Lysate
Antibody Dilution: 1.0 μ g/ml

Host: Rabbit
Target Name: PDE8B
Sample Tissue: Human MDA-MB-435s lysates
Antibody Dilution: 1 μ g/ml