

## Product datasheet for **TA359699**

### PDCD2 Rabbit Polyclonal Antibody

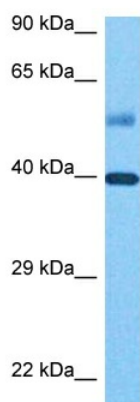
#### Product data:

|                         |   |
|-------------------------|---|
| Product Type:           | Primary Antibodies  |
| Applications:           | WB  |
| Reactivity:             | Human   |
| Host:                   | Rabbit  |
| Clonality:              | Polyclonal  |
| Immunogen:              | The immunogen is a synthetic peptide directed towards the middle region of human PDCD2  |
| Specificity:            | <b>Expected reactivity:</b> Human   |
| Formulation:            | Liquid. Purified antibody supplied in 1x PBS buffer with 0.09% (w/v) sodium azide and 2% sucrose.<br><i>Note that this product is shipped as lyophilized powder to China customers.</i>   |
| Concentration:          | lot specific  |
| Purification:           | Affinity purified   |
| Conjugation:            | Unconjugated  |
| Storage:                | For short term use, store at 2-8°C up to 1 week. For long term storage, store at -20°C in small aliquots to prevent freeze-thaw cycles.   |
| Stability:              | Shelf life: one year from despatch.   |
| Predicted Protein Size: | 37 kDa  |
| Gene Name:              | programmed cell death 2   |
| Database Link:          | <a href="#">NP_001186391.1</a><br><a href="#">Entrez Gene 5134 Human</a><br><a href="#">Q16342</a>  |
| Background:             | This gene encodes a nuclear protein expressed in a variety of tissues. Expression of this gene has been shown to be repressed by B-cell CLL/lymphoma 6 (BCL6), a transcriptional repressor required for lymph node germinal center development, suggesting that BCL6 regulates apoptosis by its effects on this protein. Alternative splicing results in multiple transcript variants and pseudogenes have been identified on chromosomes 9 and 12. |
| Synonyms:               | MGC12347; RP8; ZMYND7   |



[View online »](#)

## Product images:



Host: Rabbit  
Target Name: PDCD2  
Sample Type: Liver Tumor Lysate  
Antibody Dilution: 1.0µg/ml

Host: Rabbit  
Target Name: PDCD2  
Sample Tissue: Liver Tumor lysates  
Antibody Dilution: 1ug/ml