

Product datasheet for **TA359678**

MAP4 Rabbit Polyclonal Antibody

Product data:

Product Type:	Primary Antibodies
Applications:	IHC, WB
Reactivity:	Human
Host:	Rabbit
Clonality:	Polyclonal
Immunogen:	The immunogen is a synthetic peptide directed towards the N-terminal region of Human MAP4
Specificity:	Expected reactivity: Human
Formulation:	Liquid. Purified antibody supplied in 1x PBS buffer with 0.09% (w/v) sodium azide and 2% sucrose. <i>Note that this product is shipped as lyophilized powder to China customers.</i>
Concentration:	lot specific
Purification:	Affinity Purified
Conjugation:	Unconjugated
Storage:	For short term use, store at 2-8°C up to 1 week. For long term storage, store at -20°C in small aliquots to prevent freeze-thaw cycles.
Stability:	Shelf life: one year from despatch.
Predicted Protein Size:	126kDa
Gene Name:	microtubule associated protein 4
Database Link:	Entrez Gene 4134 Human P27816



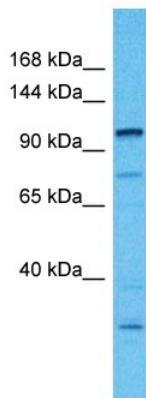
[View online »](#)

Background:

The protein encoded by this gene is a major non-neuronal microtubule-associated protein. This protein contains a domain similar to the microtubule-binding domains of neuronal microtubule-associated protein (MAP2) and microtubule-associated protein tau (MAPT/TAU). This protein promotes microtubule assembly, and has been shown to counteract destabilization of interphase microtubule catastrophe promotion. Cyclin B was found to interact with this protein, which targets cell division cycle 2 (CDC2) kinase to microtubules. The phosphorylation of this protein affects microtubule properties and cell cycle progression. Multiple transcript variants encoding different isoforms have been found for this gene.

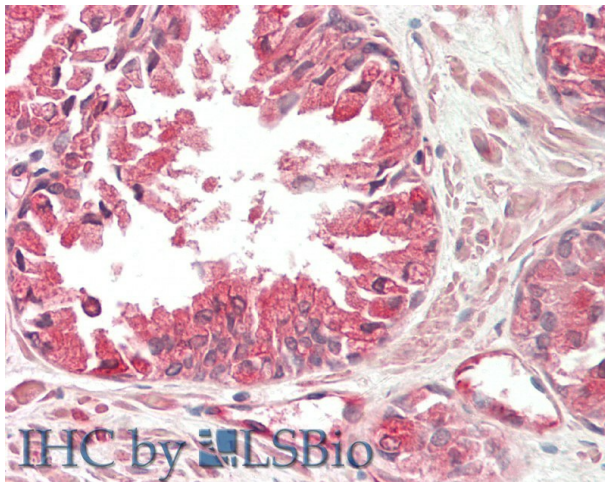
Synonyms:

DKFZp779A1753; MAP-4; MGC8617; OTTHUMP00000210723; OTTHUMP00000210727

Product images:


Host: Rabbit
 Target Name: MAP4
 Sample Tissue: 786-0 Cell Lysate
 Antibody Dilution: 1.0µg/ml

Host: Rabbit
 Target Name: MAP4
 Sample Type: 786-0 Whole Cell lysates
 Antibody Dilution: 1.0ug/ml



Rabbit Anti-MAP4 antibody
 Catalog Number: ARP74631
 Formalin Fixed Paraffin Embedded Tissue:
 Human Prostate
 Primary antibody Concentration: 1:100
 Secondary Antibody: Donkey anti-Rabbit-Cy3
 Secondary Antibody Concentration: 1:200
 Magnification: 20x
 Exposure Time: 0.5-2.0sec