

Product datasheet for **TA359676**

MBNL2 Rabbit Polyclonal Antibody

Product data:

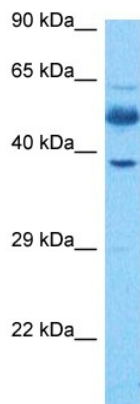
Product Type:	Primary Antibodies
Applications:	WB
Reactivity:	Human
Host:	Rabbit
Clonality:	Polyclonal
Immunogen:	The immunogen is a synthetic peptide directed towards the N terminal region of human MBNL2
Specificity:	Expected reactivity: Human
Formulation:	Liquid. Purified antibody supplied in 1x PBS buffer with 0.09% (w/v) sodium azide and 2% sucrose.
Concentration:	lot specific
Purification:	Affinity purified
Conjugation:	Unconjugated
Storage:	For short term use, store at 2-8°C up to 1 week. For long term storage, store at -20°C in small aliquots to prevent freeze-thaw cycles.
Stability:	Shelf life: one year from despatch.
Predicted Protein Size:	40 kDa
Gene Name:	muscleblind like splicing regulator 2
Database Link:	NP_001292999.1 Entrez Gene 10150 Human Q5VZF2-2
Background:	This gene is a member of the muscleblind protein family which was initially described in <i>Drosophila melanogaster</i> . This gene encodes a C3H-type zinc finger protein that modulates alternative splicing of pre-mRNAs. Muscleblind proteins bind specifically to expanded dsCUG RNA but not to normal size CUG repeats and may thereby play a role in the pathophysiology of myotonic dystrophy. Several alternatively spliced transcript variants have been described but the full-length nature of only some have been determined.



[View online »](#)

Synonyms: DKFZp781H1296; MBLL; MBLL39; MGC120625; MGC120626; MGC120628; MLP1; OTTHUMP00000178763; PRO2032

Product images:



Host: Rabbit
Target Name: MBNL2
Sample Type: Liver Tumor Lysate
Antibody Dilution: 1.0µg/ml

Host: Rabbit
Target Name: MBNL2
Sample Tissue: Liver Tumor lysates
Antibody Dilution: 1ug/ml