

## Product datasheet for **TA359675**

### NTAL (LAT2) Rabbit Polyclonal Antibody

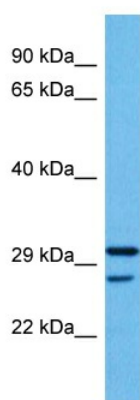
#### Product data:

Product Type:	Primary Antibodies
Applications:	WB
Reactivity:	Human
Host:	Rabbit
Clonality:	Polyclonal
Immunogen:	The immunogen is a synthetic peptide directed towards the middle region of human LAT2
Specificity:	<b>Expected reactivity:</b> Human
Formulation:	Liquid. Purified antibody supplied in 1x PBS buffer with 0.09% (w/v) sodium azide and 2% sucrose. <i>Note that this product is shipped as lyophilized powder to China customers.</i>
Concentration:	lot specific
Purification:	Affinity purified
Conjugation:	Unconjugated
Storage:	For short term use, store at 2-8°C up to 1 week. For long term storage, store at -20°C in small aliquots to prevent freeze-thaw cycles.
Stability:	Shelf life: one year from despatch.
Predicted Protein Size:	26 kDa
Gene Name:	linker for activation of T-cells family member 2
Database Link:	<a href="#">NP_054865.2</a> <a href="#">Entrez Gene 7462 Human</a> <a href="#">Q9GZY6</a>
Background:	This gene is one of the contiguous genes at 7q11.23 commonly deleted in Williams syndrome, a multisystem developmental disorder. This gene consists of at least 14 exons, and its alternative splicing generates 3 transcript variants, all encoding the same protein.
Synonyms:	HSPC046; LAB; NTAL; OTTHUMP00000179119; WBS15; WBSCR5; WBSCR15; WSCR5
Protein Families:	Transmembrane



[View online »](#)

## Product images:



Host: Rabbit  
Target Name: LAT2  
Sample Type: COLO205 Cell Lysate  
Antibody Dilution: 1.0 $\mu$ g/ml

Host: Rabbit  
Target Name: LAT2  
Sample Tissue: Human COLO205 Whole Cell lysates  
Antibody Dilution: 1 $\mu$ g/ml