

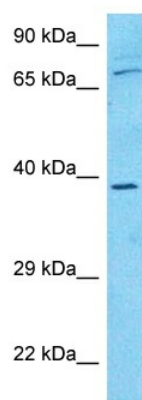
## Product datasheet for **TA359669**

### KIAA1279 (KIF1BP) Rabbit Polyclonal Antibody

#### Product data:

<b>Product Type:</b>	Primary Antibodies
<b>Applications:</b>	WB
<b>Reactivity:</b>	Human
<b>Host:</b>	Rabbit
<b>Clonality:</b>	Polyclonal
<b>Immunogen:</b>	The immunogen is a synthetic peptide directed towards the N-terminal region of Human KBP
<b>Specificity:</b>	<b>Expected reactivity:</b> Human
<b>Formulation:</b>	Liquid. Purified antibody supplied in 1x PBS buffer with 0.09% (w/v) sodium azide and 2% sucrose.
<b>Concentration:</b>	lot specific
<b>Purification:</b>	Affinity purified
<b>Conjugation:</b>	Unconjugated
<b>Storage:</b>	For short term use, store at 2-8°C up to 1 week. For long term storage, store at -20°C in small aliquots to prevent freeze-thaw cycles.
<b>Stability:</b>	Shelf life: one year from despatch.
<b>Predicted Protein Size:</b>	68kDa
<b>Gene Name:</b>	KIF1 binding protein
<b>Database Link:</b>	<a href="#">NP_056449</a> <a href="#">Entrez Gene 26128 Human</a> <a href="#">Q96EK5</a>
<b>Background:</b>	This gene encodes a kinesin family member 1 binding protein that is characterized by two tetratricopeptide repeats. The encoded protein localizes to the mitochondria and may be involved in regulating transport of the mitochondria. Mutations in this gene are associated with Goldberg-Shprintzen megacolon syndrome.



**Product images:**

Host: Rabbit  
Target Name: KBP  
Sample Tissue: HCT15 Cell Lysate  
Antibody Dilution: 1.0µg/ml

Host: Rabbit  
Target Name: KBP  
Sample Type: HCT15 Whole Cell lysates  
Antibody Dilution: 1.0ug/ml