

Product datasheet for **TA359666**

KCNQ4 Rabbit Polyclonal Antibody

Product data:

Product Type:	Primary Antibodies
Applications:	WB
Reactivity:	Human, Mouse
Host:	Rabbit
Clonality:	Polyclonal
Immunogen:	The immunogen is a synthetic peptide directed towards the C terminal region of human KCNQ4
Specificity:	Expected reactivity: Human
Formulation:	Liquid. Purified antibody supplied in 1x PBS buffer with 0.09% (w/v) sodium azide and 2% sucrose. <i>Note that this product is shipped as lyophilized powder to China customers.</i>
Concentration:	lot specific
Purification:	Affinity purified
Conjugation:	Unconjugated
Storage:	For short term use, store at 2-8°C up to 1 week. For long term storage, store at -20°C in small aliquots to prevent freeze-thaw cycles.
Stability:	Shelf life: one year from despatch.
Predicted Protein Size:	76 kDa
Gene Name:	potassium voltage-gated channel subfamily Q member 4
Database Link:	NP_004691.2 Entrez Gene 60613 Mouse Entrez Gene 9132 Human P56696



[View online »](#)

Background:

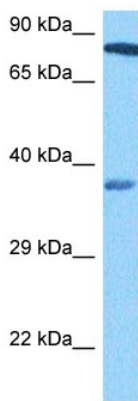
The protein encoded by this gene forms a potassium channel that is thought to play a critical role in the regulation of neuronal excitability, particularly in sensory cells of the cochlea. The current generated by this channel is inhibited by M1 muscarinic acetylcholine receptors and activated by retigabine, a novel anti-convulsant drug. The encoded protein can form a homomultimeric potassium channel or possibly a heteromultimeric channel in association with the protein encoded by the KCNQ3 gene. Defects in this gene are a cause of nonsyndromic sensorineural deafness type 2 (DFNA2), an autosomal dominant form of progressive hearing loss. Two transcript variants encoding different isoforms have been found for this gene.

Synonyms:

DFNA2; DFNA2A; Kv7.4

Protein Families:

Druggable Genome, Ion Channels: Potassium, Transmembrane

Product images:


Host: Rabbit
 Target Name: KCNQ4
 Sample Type: HepG2 Cell Lysate
 Antibody Dilution: 1.0µg/ml

Host: Rabbit
 Target Name: KCNQ4
 Sample Tissue: HepG2 Whole Cell lysates
 Antibody Dilution: 1ug/ml



Host: Rabbit
 Target Name: KCNQ4
 Sample Type: Mouse Brain Lysate
 Antibody Dilution: 1.0µg/ml

Host: Mouse
 Target Name: KCNQ4
 Sample Tissue: Mouse Brain
 Antibody Dilution: 1ug/ml