

Product datasheet for **TA359665**

ITIH1 Rabbit Polyclonal Antibody

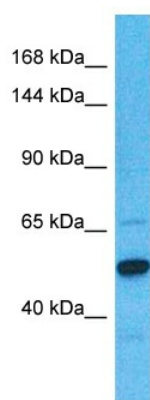
Product data:

Product Type:	Primary Antibodies
Applications:	WB
Reactivity:	Human
Host:	Rabbit
Clonality:	Polyclonal
Immunogen:	The immunogen is a synthetic peptide directed towards the C-terminal region of Human ITIH1
Specificity:	Expected reactivity: Human
Formulation:	Liquid. Purified antibody supplied in 1x PBS buffer with 0.09% (w/v) sodium azide and 2% sucrose. <i>Note that this product is shipped as lyophilized powder to China customers.</i>
Concentration:	lot specific
Purification:	Affinity Purified
Conjugation:	Unconjugated
Storage:	For short term use, store at 2-8°C up to 1 week. For long term storage, store at -20°C in small aliquots to prevent freeze-thaw cycles.
Stability:	Shelf life: one year from despatch.
Predicted Protein Size:	68kDa
Gene Name:	inter-alpha-trypsin inhibitor heavy chain 1
Database Link:	Entrez Gene 3697 Human P19827-3
Background:	The protein encoded by this gene is the heavy chain of a serine protease inhibitor that may serve to carry hyaluronan in plasma. This gene is part of a cluster of similar genes on chromosome 3. Multiple transcript variants encoding different isoforms have been found for this gene.
Synonyms:	H1P; IATIH; IGHEP1; ITIH; MGC126415; SHAP



[View online »](#)

Product images:



Host: Rabbit
Target Name: ITIH1
Sample Tissue: Fetal Kidney Lysate
Antibody Dilution: 1.0 μ g/ml

Host: Rabbit
Target Name: ITIH1
Sample Type: Fetal Kidney lysates
Antibody Dilution: 1.0ug/ml