

Product datasheet for **TA359664**

KCNJ5 Rabbit Polyclonal Antibody

Product data:

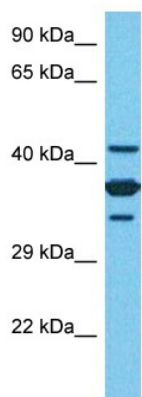
Product Type:	Primary Antibodies
Applications:	WB
Reactivity:	Human
Host:	Rabbit
Clonality:	Polyclonal
Immunogen:	The immunogen is a synthetic peptide directed towards the C-terminal region of Human KCNJ5
Specificity:	Expected reactivity: Human
Formulation:	Liquid. Purified antibody supplied in 1x PBS buffer with 0.09% (w/v) sodium azide and 2% sucrose. <i>Note that this product is shipped as lyophilized powder to China customers.</i>
Concentration:	lot specific
Purification:	Affinity purified
Conjugation:	Unconjugated
Storage:	For short term use, store at 2-8°C up to 1 week. For long term storage, store at -20°C in small aliquots to prevent freeze-thaw cycles.
Stability:	Shelf life: one year from despatch.
Predicted Protein Size:	46 kDa
Gene Name:	potassium voltage-gated channel subfamily J member 5
Database Link:	XP_005271600.1 Entrez Gene 3762 Human P48544
Background:	Potassium channels are present in most mammalian cells, where they participate in a wide range of physiologic responses. The protein encoded by this gene is an integral membrane protein and inward-rectifier type potassium channel. The encoded protein, which has a greater tendency to allow potassium to flow into a cell rather than out of a cell, is controlled by G-proteins. It may associate with two other G-protein-activated potassium channels to form a heteromultimeric pore-forming complex.



[View online »](#)

Synonyms: CIR; GIRK4; KATP-1; KATP1; KIR3.4

Product images:



Host: Rabbit
Target Name: KCNJ5
Sample Tissue: MCF7 Cell Lysate
Antibody Dilution: 1.0 μ g/ml

WB Suggested Anti-KCNJ5 antibody Titration: 1
ug/mL
Sample Type: Human MCF7 Whole Cell