

Product datasheet for **TA359661**

IMP3 Rabbit Polyclonal Antibody

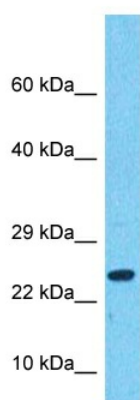
Product data:

Product Type:	Primary Antibodies
Applications:	WB
Reactivity:	Human
Host:	Rabbit
Clonality:	Polyclonal
Immunogen:	The immunogen is a synthetic peptide directed towards the N-terminal region of Human IMP3
Specificity:	Expected reactivity: Human
Formulation:	Liquid. Purified antibody supplied in 1x PBS buffer with 0.09% (w/v) sodium azide and 2% sucrose. <i>Note that this product is shipped as lyophilized powder to China customers.</i>
Concentration:	lot specific
Purification:	Affinity purified
Conjugation:	Unconjugated
Storage:	For short term use, store at 2-8°C up to 1 week. For long term storage, store at -20°C in small aliquots to prevent freeze-thaw cycles.
Stability:	Shelf life: one year from despatch.
Predicted Protein Size:	20kDa
Gene Name:	IMP3, U3 small nucleolar ribonucleoprotein
Database Link:	NP_060755 Entrez Gene 55272 Human Q9NV31
Background:	This gene encodes the human homolog of the yeast Imp3 protein. The protein localizes to the nucleoli and interacts with the U3 snoRNP complex. The protein contains an S4 domain.
Synonyms:	BRMS2; C15orf12; DKFZp586L0118; FLJ10968; MRPS4; OTTHUMP00000183524



[View online »](#)

Product images:



Host: Rabbit
Target Name: IMP3
Sample Tissue: Hela Cell Lysate
Antibody Dilution: 1.0 μ g/ml

Host: Rabbit
Target Name: IMP3
Sample Type: Hela Whole Cell lysates
Antibody Dilution: 1.0ug/ml