

Product datasheet for **TA359658**

ILF3 Rabbit Polyclonal Antibody

Product data:

Product Type:	Primary Antibodies
Applications:	WB
Reactivity:	Human
Host:	Rabbit
Clonality:	Polyclonal
Immunogen:	The immunogen is a synthetic peptide directed towards the C terminal region of human ILF3
Specificity:	Expected reactivity: Human
Formulation:	Liquid. Purified antibody supplied in 1x PBS buffer with 0.09% (w/v) sodium azide and 2% sucrose. <i>Note that this product is shipped as lyophilized powder to China customers.</i>
Concentration:	lot specific
Purification:	Affinity purified
Conjugation:	Unconjugated
Storage:	For short term use, store at 2-8°C up to 1 week. For long term storage, store at -20°C in small aliquots to prevent freeze-thaw cycles.
Stability:	Shelf life: one year from despatch.
Predicted Protein Size:	98 kDa
Gene Name:	interleukin enhancer binding factor 3
Database Link:	NP_001131145.1 Entrez Gene 3609 Human Q12906



[View online »](#)

Background:

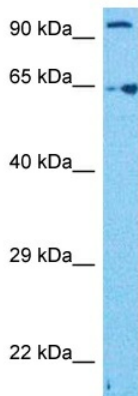
This gene encodes a double-stranded RNA (dsRNA) binding protein that complexes with other proteins, dsRNAs, small noncoding RNAs, and mRNAs to regulate gene expression and stabilize mRNAs. This protein (NF90, ILF3) forms a heterodimer with a 45 kDa transcription factor (NF45, ILF2) required for T-cell expression of interleukin 2. This complex has been shown to affect the redistribution of nuclear mRNA to the cytoplasm. Knockdown of NF45 or NF90 protein retards cell growth, possibly by inhibition of mRNA stabilization. In contrast, an isoform (NF110) of this gene that is predominantly restricted to the nucleus has only minor effects on cell growth when its levels are reduced. Alternative splicing results in multiple transcript variants encoding distinct isoforms.

Synonyms:

CBTF; DRBF; DRBP76; MMP4; MPHOSPH4; MPP4; NF-AT-90; NF90; NF110; NFAR; NFAR-1; NFAR2; TCP80; TCP110

Protein Families:

Druggable Genome, Transcription Factors

Product images:

Host: Rabbit
Target Name: ILF3
Sample Type: HCT15 Cell Lysate
Antibody Dilution: 1.0µg/ml

Host: Rabbit
Target Name: ILF3
Sample Tissue: Human HCT15 Whole Cell lysates
Antibody Dilution: 1ug/ml