

Product datasheet for **TA359657**

IL33 Rabbit Polyclonal Antibody

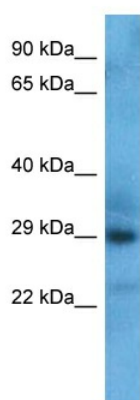
Product data:

Product Type:	Primary Antibodies
Applications:	WB
Reactivity:	Human
Host:	Rabbit
Clonality:	Polyclonal
Immunogen:	The immunogen is a synthetic peptide directed towards the C-terminal region of Human IL33
Specificity:	Expected reactivity: Human
Formulation:	Liquid. Purified antibody supplied in 1x PBS buffer with 0.09% (w/v) sodium azide and 2% sucrose. <i>Note that this product is shipped as lyophilized powder to China customers.</i>
Concentration:	lot specific
Purification:	Affinity purified
Conjugation:	Unconjugated
Storage:	For short term use, store at 2-8°C up to 1 week. For long term storage, store at -20°C in small aliquots to prevent freeze-thaw cycles.
Stability:	Shelf life: one year from despatch.
Predicted Protein Size:	29 kDa
Gene Name:	interleukin 33
Database Link:	XP_005251684.1 Entrez Gene 90865 Human O95760
Background:	IL33 (MIM 608678) is a member of the IL1 (see MIM 147760) family that potently drives production of T helper-2 (Th2)-associated cytokines (e.g., IL4; MIM 147780). IL33 is a ligand for IL33R (IL1RL1; MIM 601203), an IL1 family receptor that is selectively expressed on Th2 cells and mast cells.
Synonyms:	C9orf26; DKFZp586H0523; DVS27; IL-1F11; IL-33; IL1F11; NF-HEV; NFEHEV; NFHEV; RP11-575C20.2



[View online »](#)

Product images:



Host: Rabbit
Target Name: IL33
Sample Tissue: 293T Cell Lysate
Antibody Dilution: 1.0 μ g/ml

WB Suggested Anti-IL33 antibody Titration: 1
ug/mL
Sample Type: Human 293T Whole Cell