

## Product datasheet for **TA359655**

### IGBP1 Rabbit Polyclonal Antibody

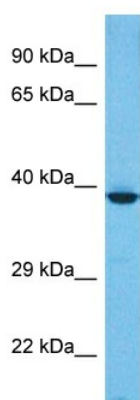
#### Product data:

Product Type:	Primary Antibodies
Applications:	WB
Reactivity:	Human
Host:	Rabbit
Clonality:	Polyclonal
Immunogen:	The immunogen is a synthetic peptide directed towards the C-terminal region of Human IGBP1
Specificity:	<b>Expected reactivity:</b> Human
Formulation:	Liquid. Purified antibody supplied in 1x PBS buffer with 0.09% (w/v) sodium azide and 2% sucrose. <i>Note that this product is shipped as lyophilized powder to China customers.</i>
Concentration:	lot specific
Purification:	Affinity purified
Conjugation:	Unconjugated
Storage:	For short term use, store at 2-8°C up to 1 week. For long term storage, store at -20°C in small aliquots to prevent freeze-thaw cycles.
Stability:	Shelf life: one year from despatch.
Predicted Protein Size:	37 kDa
Gene Name:	immunoglobulin (CD79A) binding protein 1
Database Link:	<a href="#">NP_001542.1</a> <a href="#">Entrez Gene 3476 Human</a> <a href="#">P78318</a>
Background:	The proliferation and differentiation of B cells is dependent upon a B-cell antigen receptor (BCR) complex. Binding of antigens to specific B-cell receptors results in a tyrosine phosphorylation reaction through the BCR complex and leads to multiple signal transduction pathways.
Synonyms:	ALPHA-4; IBP1



[View online »](#)

## Product images:



Host: Rabbit  
Target Name: IGBP1  
Sample Tissue: Stomach Tumor Lysate  
Antibody Dilution: 1.0 $\mu$ g/ml

WB Suggested Anti-IGBP1 antibody Titration: 1  
ug/mL  
Sample Type: Human Stomach Tumor