

Product datasheet for **TA359650**

HLA-DRB3 Rabbit Polyclonal Antibody

Product data:

Product Type:	Primary Antibodies
Applications:	WB
Reactivity:	Human
Host:	Rabbit
Clonality:	Polyclonal
Immunogen:	The immunogen is a synthetic peptide directed towards the N terminal region of human HLA-DRB3
Specificity:	Expected reactivity: Human
Formulation:	Liquid. Purified antibody supplied in 1x PBS buffer with 0.09% (w/v) sodium azide and 2% sucrose. <i>Note that this product is shipped as lyophilized powder to China customers.</i>
Concentration:	lot specific
Purification:	Affinity purified
Conjugation:	Unconjugated
Storage:	For short term use, store at 2-8°C up to 1 week. For long term storage, store at -20°C in small aliquots to prevent freeze-thaw cycles.
Stability:	Shelf life: one year from despatch.
Predicted Protein Size:	29 kDa
Gene Name:	major histocompatibility complex, class II, DR beta 3
Database Link:	NP_072049.2 Entrez Gene 3125 Human P79483



[View online »](#)

Background:

HLA-DRB3 belongs to the HLA class II beta chain paralogues. This class II molecule is a heterodimer consisting of an alpha (DRA) and a beta (DRB) chain, both anchored in the membrane. It plays a central role in the immune system by presenting peptides derived from extracellular proteins. Class II molecules are expressed in antigen presenting cells (APC: B lymphocytes, dendritic cells, macrophages). The beta chain is approximately 26-28 kDa and its gene contains 6 exons. Exon one encodes the leader peptide, exons 2 and 3 encode the two extracellular domains, exon 4 encodes the transmembrane domain and exon 5 encodes the cytoplasmic tail. Within the DR molecule the beta chain contains all the polymorphisms specifying the peptide binding specificities. Typing for these polymorphisms is routinely done for bone marrow and kidney transplantation. DRB1 is expressed at a level five times higher than its paralogues DRB3, DRB4 and DRB5. The presence of DRB3 is linked with allelic variants of DRB1, otherwise it is omitted. There are 4 related pseudogenes: DRB2, DRB6, DRB7, DRB8 and DRB9.

Synonyms:

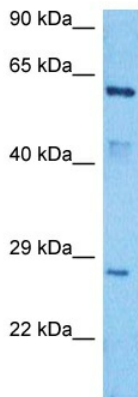
HLA-DR3B

Protein Families:

Transmembrane

Protein Pathways:

Allograft rejection, Antigen processing and presentation, Asthma, Autoimmune thyroid disease, Cell adhesion molecules (CAMs), Graft-versus-host disease, Hematopoietic cell lineage, Systemic lupus erythematosus, Type I diabetes mellitus, Viral myocarditis

Product images:

Host: Rabbit
Target Name: HLA-DRB3
Sample Type: HepG2 Cell Lysate
Antibody Dilution: 1.0µg/ml

Host: Rabbit
Target Name: HLA-DRB3
Sample Tissue: HepG2 Whole Cell lysates
Antibody Dilution: 1ug/ml