

Product datasheet for **TA359647**

HAPLN2 Rabbit Polyclonal Antibody

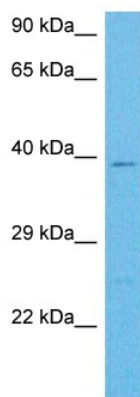
Product data:

Product Type:	Primary Antibodies
Applications:	WB
Reactivity:	Human
Host:	Rabbit
Clonality:	Polyclonal
Immunogen:	The immunogen for Anti-HAPLN2 antibody is: synthetic peptide directed towards the C-terminal region of Human HPLN2
Specificity:	Expected reactivity: Human
Formulation:	Liquid. Purified antibody supplied in 1x PBS buffer with 0.09% (w/v) sodium azide and 2% sucrose.
Concentration:	lot specific
Purification:	Affinity purified
Conjugation:	Unconjugated
Storage:	For short term use, store at 2-8°C up to 1 week. For long term storage, store at -20°C in small aliquots to prevent freeze-thaw cycles.
Stability:	Shelf life: one year from despatch.
Predicted Protein Size:	37 kDa
Gene Name:	hyaluronan and proteoglycan link protein 2
Database Link:	XP_005245472.1 Entrez Gene 60484 Human Q9GZV7
Synonyms:	BRAL1



[View online »](#)

Product images:



Host: Rabbit
Target Name: HPLN2
Sample Tissue: U937 Cell Lysate
Antibody Dilution: 1.0µg/ml

WB Suggested Anti-HPLN2 antibody Titration: 1
ug/mL
Sample Type: Human U937 Whole Cell