

Product datasheet for **TA359643**

GNB5 Rabbit Polyclonal Antibody

Product data:

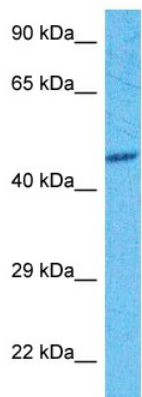
Product Type:	Primary Antibodies
Applications:	WB
Reactivity:	Human
Host:	Rabbit
Clonality:	Polyclonal
Immunogen:	The immunogen is a synthetic peptide directed towards the C-terminal region of Human GBB5
Specificity:	Expected reactivity: Human
Formulation:	Liquid. Purified antibody supplied in 1x PBS buffer with 0.09% (w/v) sodium azide and 2% sucrose. <i>Note that this product is shipped as lyophilized powder to China customers.</i>
Concentration:	lot specific
Purification:	Affinity Purified
Conjugation:	Unconjugated
Storage:	For short term use, store at 2-8°C up to 1 week. For long term storage, store at -20°C in small aliquots to prevent freeze-thaw cycles.
Stability:	Shelf life: one year from despatch.
Predicted Protein Size:	43kDa
Gene Name:	G protein subunit beta 5
Database Link:	NP_057278 Entrez Gene 10681 Human O14775
Background:	Heterotrimeric guanine nucleotide-binding proteins (G proteins), which integrate signals between receptors and effector proteins, are composed of an alpha, a beta, and a gamma subunit. These subunits are encoded by families of related genes. This gene encodes a beta subunit. Beta subunits are important regulators of alpha subunits, as well as of certain signal transduction receptors and effectors. Alternatively spliced transcript variants encoding different isoforms exist.



[View online »](#)

Synonyms: FLJ37457; FLJ43714; GB5; Gbeta5

Product images:



Host: Rabbit
Target Name: GBB5
Sample Tissue: Jurkat Cell Lysate
Antibody Dilution: 1.0 μ g/ml

Host: Rabbit
Target Name: GBB5
Sample Type: Jurkat Whole Cell lysates
Antibody Dilution: 1.0 μ g/ml