

## Product datasheet for **TA359640**

### GNAI3 Rabbit Polyclonal Antibody

#### Product data:

Product Type:	Primary Antibodies
Applications:	WB
Reactivity:	Human
Host:	Rabbit
Clonality:	Polyclonal
Immunogen:	The immunogen is a synthetic peptide directed towards the middle region of human GNAI3
Specificity:	<b>Expected reactivity:</b> Human
Formulation:	Liquid. Purified antibody supplied in 1x PBS buffer with 0.09% (w/v) sodium azide and 2% sucrose. <i>Note that this product is shipped as lyophilized powder to China customers.</i>
Concentration:	lot specific
Purification:	Affinity purified
Conjugation:	Unconjugated
Storage:	For short term use, store at 2-8°C up to 1 week. For long term storage, store at -20°C in small aliquots to prevent freeze-thaw cycles.
Stability:	Shelf life: one year from despatch.
Predicted Protein Size:	38 kDa
Gene Name:	G protein subunit alpha i3
Database Link:	<a href="#">NP_006487.1</a> <a href="#">Entrez Gene 2773 Human P08754</a>
Background:	Guanine nucleotide-binding proteins (G proteins) are involved as modulators or transducers in various transmembrane signaling pathways. G proteins are composed of 3 units: alpha, beta and gamma. This gene encodes an alpha subunit and belongs to the G-alpha family. Mutation in this gene, resulting in a gly40-to-arg substitution, is associated with auriculocondylar syndrome, and shown to affect downstream targets in the G protein-coupled endothelin receptor pathway.
Synonyms:	87U6; FLJ26559

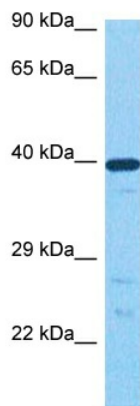


[View online »](#)

**Protein Families:** Druggable Genome

**Protein Pathways:** Axon guidance, Chemokine signaling pathway, Gap junction, Leukocyte transendothelial migration, Long-term depression, Melanogenesis, Progesterone-mediated oocyte maturation, Tight junction

### Product images:



Host: Rabbit  
Target Name: GNAI3  
Sample Type: 786-0 Cell Lysate  
Antibody Dilution: 1.0µg/ml

Host: Rabbit  
Target Name: GNAI3  
Sample Tissue: 786-0 Whole Cell lysates  
Antibody Dilution: 1ug/ml