

## Product datasheet for **TA359633**

### EIF3F Rabbit Polyclonal Antibody

#### Product data:

Product Type:	Primary Antibodies
Applications:	WB
Reactivity:	Human
Host:	Rabbit
Clonality:	Polyclonal
Immunogen:	The immunogen is a synthetic peptide directed towards the middle region of Human EIF3F
Specificity:	<b>Expected reactivity:</b> Human
Formulation:	Liquid. Purified antibody supplied in 1x PBS buffer with 0.09% (w/v) sodium azide and 2% sucrose. <i>Note that this product is shipped as lyophilized powder to China customers.</i>
Concentration:	lot specific
Purification:	Affinity purified
Conjugation:	Unconjugated
Storage:	For short term use, store at 2-8°C up to 1 week. For long term storage, store at -20°C in small aliquots to prevent freeze-thaw cycles.
Stability:	Shelf life: one year from despatch.
Predicted Protein Size:	39kDa
Gene Name:	eukaryotic translation initiation factor 3 subunit F
Database Link:	<a href="#">NP_003745</a> <a href="#">Entrez Gene 8665 Human</a> <a href="#">O00303</a>



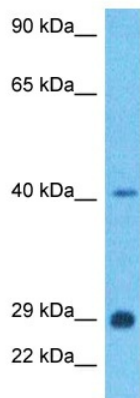
[View online »](#)

**Background:**

EIF3F is a component of the eukaryotic translation initiation factor 3 (eIF-3) complex, which is required for several steps in the initiation of protein synthesis. The eIF-3 complex associates with the 40S ribosome and facilitates the recruitment of eIF-1, eIF-1A, eIF-2:GTP:methionyl-tRNA<sub>i</sub> and eIF-5 to form the 43S preinitiation complex (43S PIC). The eIF-3 complex stimulates mRNA recruitment to the 43S PIC and scanning of the mRNA for AUG recognition. The eIF-3 complex is also required for disassembly and recycling of post-termination ribosomal complexes and subsequently prevents premature joining of the 40S and 60S ribosomal subunits prior to initiation.

**Synonyms:**

eIF-3-epsilon; eIF3-epsilon; eIF3-p47; EIF3S5

**Product images:**

Host: Rabbit  
Target Name: EIF3F  
Sample Tissue: Stomach Tumor Lysate  
Antibody Dilution: 1.0 µg/ml

Host: Rabbit  
Target Name: EIF3F  
Sample Tissue: Human Stomach Tumor  
Antibody Dilution: 1ug/ml