

## Product datasheet for **TA359631**

### DTX3 Rabbit Polyclonal Antibody

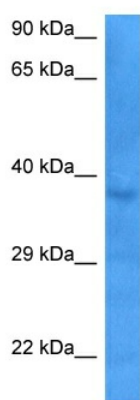
#### Product data:

Product Type:	Primary Antibodies
Applications:	WB
Reactivity:	Human
Host:	Rabbit
Clonality:	Polyclonal
Immunogen:	The immunogen is a synthetic peptide directed towards the middle region of human DTX3
Specificity:	<b>Expected reactivity:</b> Human
Formulation:	Liquid. Purified antibody supplied in 1x PBS buffer with 0.09% (w/v) sodium azide and 2% sucrose. <i>Note that this product is shipped as lyophilized powder to China customers.</i>
Concentration:	lot specific
Purification:	Affinity purified
Conjugation:	Unconjugated
Storage:	For short term use, store at 2-8°C up to 1 week. For long term storage, store at -20°C in small aliquots to prevent freeze-thaw cycles.
Stability:	Shelf life: one year from despatch.
Predicted Protein Size:	38 kDa
Gene Name:	deltex 3, E3 ubiquitin ligase
Database Link:	<a href="#">NP_001273174.1</a> <a href="#">Entrez Gene 196403 Human</a> <a href="#">Q8N9I9</a>
Background:	DTX3 functions as an E3 ubiquitin ligase (Takeyama et al., 2003 [PubMed 12670957]). [supplied by OMIM, Nov 2009]
Synonyms:	Deltex3; FLJ34766; MGC138863; MGC138864; RNF154
Protein Families:	Druggable Genome
Protein Pathways:	Notch signaling pathway



[View online »](#)

## Product images:



Host: Rabbit  
Target Name: DTX3  
Sample Type: 721\_B Cell Lysate  
Antibody Dilution: 1.0 $\mu$ g/ml

Host: Rabbit  
Target Name: DTX3  
Sample Tissue: 721\_B Whole Cell lysates  
Antibody Dilution: 1 $\mu$ g/ml