

## Product datasheet for **TA359626**

### DNA2 Rabbit Polyclonal Antibody

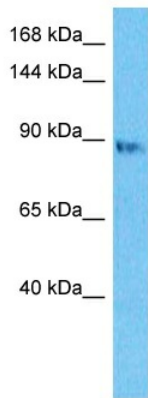
#### Product data:

Product Type:	Primary Antibodies
Applications:	WB
Reactivity:	Human
Host:	Rabbit
Clonality:	Polyclonal
Immunogen:	The immunogen is a synthetic peptide directed towards the middle region of Human DNA2
Specificity:	<b>Expected reactivity:</b> Human
Formulation:	Liquid. Purified antibody supplied in 1x PBS buffer with 0.09% (w/v) sodium azide and 2% sucrose. <i>Note that this product is shipped as lyophilized powder to China customers.</i>
Concentration:	lot specific
Purification:	Affinity Purified
Conjugation:	Unconjugated
Storage:	For short term use, store at 2-8°C up to 1 week. For long term storage, store at -20°C in small aliquots to prevent freeze-thaw cycles.
Stability:	Shelf life: one year from despatch.
Predicted Protein Size:	90kDa
Gene Name:	DNA replication helicase/nuclease 2
Database Link:	<a href="#">Entrez Gene 1763 Human P51530-3</a>
Background:	DNA2 is a conserved helicase/nuclease involved in the maintenance of mitochondrial and nuclear DNA stability.
Synonyms:	DNA2L; FLJ10063; KIAA0083; MGC133297



[View online »](#)

Product images:



Host: Rabbit  
Target Name: DNA2  
Sample Tissue: Jurkat Cell Lysate  
Antibody Dilution: 1.0µg/ml

Host: Rabbit  
Target Name: DNA2  
Sample Type: Jurkat Whole Cell lysates  
Antibody Dilution: 1.0ug/ml