

Product datasheet for **TA359625**

DRG1 Rabbit Polyclonal Antibody

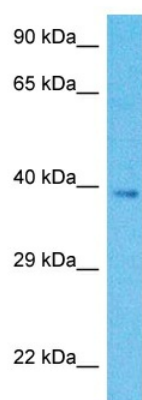
Product data:

Product Type:	Primary Antibodies
Applications:	WB
Reactivity:	Human
Host:	Rabbit
Clonality:	Polyclonal
Immunogen:	The immunogen is a synthetic peptide directed towards the middle region of Human DRG1
Specificity:	Expected reactivity: Human
Formulation:	Liquid. Purified antibody supplied in 1x PBS buffer with 0.09% (w/v) sodium azide and 2% sucrose. <i>Note that this product is shipped as lyophilized powder to China customers.</i>
Concentration:	lot specific
Purification:	Affinity purified
Conjugation:	Unconjugated
Storage:	For short term use, store at 2-8°C up to 1 week. For long term storage, store at -20°C in small aliquots to prevent freeze-thaw cycles.
Stability:	Shelf life: one year from despatch.
Predicted Protein Size:	40kDa
Gene Name:	developmentally regulated GTP binding protein 1
Database Link:	NP_004138 Entrez Gene 4733 Human Q9Y295
Background:	DRG1 is a critical regulator of cell growth under specific conditions. It implicated in differentiation and cell cycle arrest.
Synonyms:	C6orf55; DKFZp434N1827; DRG-1; LIP5; NEDD-3; NEDD3; SBP1; VTA1



[View online »](#)

Product images:



Host: Rabbit
Target Name: DRG1
Sample Tissue: OVCAR-3 Cell Lysate
Antibody Dilution: 1.0 μ g/ml

Host: Rabbit
Target Name: DRG1
Sample Type: OVCAR-3 Whole Cell lysates
Antibody Dilution: 1.0ug/ml