

Product datasheet for **TA359623**

DMC1 Rabbit Polyclonal Antibody

Product data:

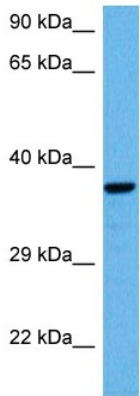
Product Type:	Primary Antibodies
Applications:	WB
Reactivity:	Human, Mouse
Host:	Rabbit
Clonality:	Polyclonal
Immunogen:	The immunogen is a synthetic peptide directed towards the middle region of human DMC1
Specificity:	Expected reactivity: Human
Formulation:	Liquid. Purified antibody supplied in 1x PBS buffer with 0.09% (w/v) sodium azide and 2% sucrose. <i>Note that this product is shipped as lyophilized powder to China customers.</i>
Concentration:	lot specific
Purification:	Affinity purified
Conjugation:	Unconjugated
Storage:	For short term use, store at 2-8°C up to 1 week. For long term storage, store at -20°C in small aliquots to prevent freeze-thaw cycles.
Stability:	Shelf life: one year from despatch.
Predicted Protein Size:	37 kDa
Gene Name:	DNA meiotic recombinase 1
Database Link:	NP_008999.2 Entrez Gene 13404 Mouse Entrez Gene 11144 Human Q14565
Background:	This gene encodes a member of the superfamily of recombinases (also called DNA strand-exchange proteins). Recombinases are important for repairing double-strand DNA breaks during mitosis and meiosis. This protein, which is evolutionarily conserved, is reported to be essential for meiotic homologous recombination and may thus play an important role in generating diversity of genetic information. Alternative splicing results in multiple transcript variants.
Synonyms:	C17orf28; dj199H16.1; DMC1H; HsLim15; LIM15; MGC150472; MGC150473



[View online »](#)

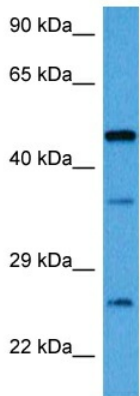
Protein Families: Druggable Genome

Product images:



Host: Rabbit
 Target Name: DMC1
 Sample Type: HCT15 Cell Lysate
 Antibody Dilution: 1.0µg/ml

Host: Rabbit
 Target Name: DMC1
 Sample Tissue: Human HCT15 Whole Cell lysates
 Antibody Dilution: 1ug/ml



Host: Rabbit
 Target Name: Dmc1
 Sample Type: Mouse Kidney Lysate
 Antibody Dilution: 1.0µg/ml

Host: Mouse
 Target Name: DMC1
 Sample Tissue: Mouse Kidney
 Antibody Dilution: 1ug/ml