

Product datasheet for TA359622

DIAPH2 Rabbit Polyclonal Antibody

Product data:

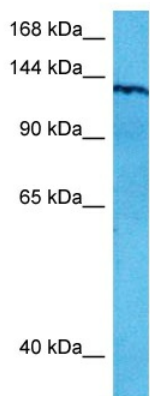
Product Type:	Primary Antibodies
Applications:	WB
Reactivity:	Human
Host:	Rabbit
Clonality:	Polyclonal
Immunogen:	The immunogen is a synthetic peptide directed towards the N terminal region of human DIAPH2
Specificity:	Expected reactivity: Human
Formulation:	Liquid. Purified antibody supplied in 1x PBS buffer with 0.09% (w/v) sodium azide and 2% sucrose. <i>Note that this product is shipped as lyophilized powder to China customers.</i>
Concentration:	lot specific
Purification:	Affinity purified
Conjugation:	Unconjugated
Storage:	For short term use, store at 2-8°C up to 1 week. For long term storage, store at -20°C in small aliquots to prevent freeze-thaw cycles.
Stability:	Shelf life: one year from despatch.
Predicted Protein Size:	126 kDa
Gene Name:	diaphanous related formin 2
Database Link:	NP_006720.1 Entrez Gene 1730 Human O60879
Background:	The product of this gene belongs to the diaphanous subfamily of the formin homology family of proteins. This gene may play a role in the development and normal function of the ovaries. Defects in this gene have been linked to premature ovarian failure 2. Alternatively spliced transcript variants encoding different isoforms have been identified.
Synonyms:	DIA; DIA2; DRF2; FLJ11167; mDia3; POF; POF2
Protein Families:	Druggable Genome



[View online »](#)

Protein Pathways: Regulation of actin cytoskeleton

Product images:



Host: Rabbit
Target Name: DIAPH2
Sample Type: PANC1 Cell Lysate
Antibody Dilution: 1.0 μ g/ml

Host: Rabbit
Target Name: DIAPH2
Sample Tissue: Human PANC1 Whole Cell lysates
Antibody Dilution: 1 μ g/ml