

Product datasheet for **TA359617**

CYC1 Rabbit Polyclonal Antibody

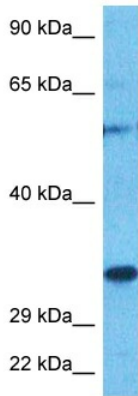
Product data:

Product Type:	Primary Antibodies
Applications:	WB
Reactivity:	Human, Mouse
Host:	Rabbit
Clonality:	Polyclonal
Immunogen:	The immunogen is a synthetic peptide directed towards the middle region of human CYC1
Formulation:	Liquid. Purified antibody supplied in 1x PBS buffer with 0.09% (w/v) sodium azide and 2% sucrose. <i>Note that this product is shipped as lyophilized powder to China customers.</i>
Concentration:	lot specific
Purification:	Affinity purified
Conjugation:	Unconjugated
Storage:	For short term use, store at 2-8°C up to 1 week. For long term storage, store at -20°C in small aliquots to prevent freeze-thaw cycles.
Stability:	Shelf life: one year from despatch.
Predicted Protein Size:	325
Gene Name:	cytochrome c1
Database Link:	NP_001907.2 Entrez Gene 66445 Mouse Entrez Gene 1537 Human P08574
Background:	This gene encodes a subunit of the cytochrome bc1 complex, which plays an important role in the mitochondrial respiratory chain by transferring electrons from the Rieske iron-sulfur protein to cytochrome c. Mutations in this gene may cause mitochondrial complex III deficiency, nuclear type 6.
Synonyms:	UQCR4
Protein Families:	Druggable Genome
Protein Pathways:	Alzheimer's disease, Cardiac muscle contraction, Huntington's disease, Metabolic pathways, Oxidative phosphorylation, Parkinson's disease



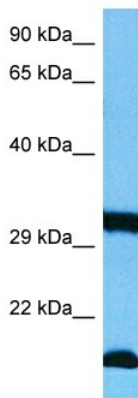
[View online »](#)

Product images:



Host: Rabbit
 Target Name: CYC1
 Sample Type: Ovary Tumor Lysate
 Antibody Dilution: 1.0µg/ml

Host: Rabbit
 Target Name: CYC1
 Sample Tissue: Human Ovary Tumor lysates
 Antibody Dilution: 1ug/ml



Host: Rabbit
 Target Name: Cyc1
 Sample Type: Mouse Small Intestine Lysate
 Antibody Dilution: 1.0µg/ml

Host: Mouse
 Target Name: CYC1
 Sample Tissue: Mouse Small Intestine
 Antibody Dilution: 1ug/ml