

## Product datasheet for **TA359607**

### CHST8 Rabbit Polyclonal Antibody

#### Product data:

Product Type:	Primary Antibodies
Applications:	WB
Reactivity:	Human
Host:	Rabbit
Clonality:	Polyclonal
Immunogen:	The immunogen is a synthetic peptide directed towards the N region of human CHST8
Specificity:	<b>Expected reactivity:</b> Human
Formulation:	Liquid. Purified antibody supplied in 1x PBS buffer with 0.09% (w/v) sodium azide and 2% sucrose.
Concentration:	lot specific
Purification:	Affinity purified
Conjugation:	Unconjugated
Storage:	For short term use, store at 2-8°C up to 1 week. For long term storage, store at -20°C in small aliquots to prevent freeze-thaw cycles.
Stability:	Shelf life: one year from despatch.
Predicted Protein Size:	46 kDa
Gene Name:	carbohydrate sulfotransferase 8
Database Link:	<a href="#">NP_001121367.1</a> <a href="#">Entrez Gene 64377 Human</a> <a href="#">Q9H2A9</a>
Background:	The protein encoded by this gene belongs to the sulfotransferase 2 family. It is predominantly expressed in the pituitary gland, and is localized to the golgi membrane. This protein catalyzes the transfer of sulfate to position 4 of non-reducing N-acetylgalactosamine (GalNAc) residues in both N-glycans and O-glycans. It is responsible for sulfation of GalNAc on luteinizing hormone (LH), which is required for production of the sex hormones. Mice lacking this enzyme, exhibit increased levels of circulating LH, and precocious sexual maturation of both male and female mice. Alternatively spliced transcript variants have been found for this gene.

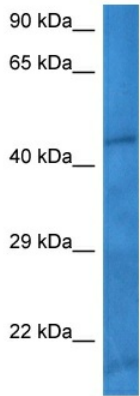


[View online »](#)

**Synonyms:** GALNAC-4-ST1; GalNAc4ST; GalNAc4ST-1; GALNAC4ST1; N-acetylgalactosamine-4-O-sulfotransferase

**Protein Families:** Transmembrane

**Product images:**



Host: Rabbit  
Target Name: CHST8  
Sample Type: Hela Cell Lysate  
Antibody Dilution: 1.0µg/ml

Host: Rabbit  
Target Name: CHST8  
Sample Tissue: Hela Whole Cell lysates  
Antibody Dilution: 1 ug/ml