

Product datasheet for **TA359597**

BMP3 Rabbit Polyclonal Antibody

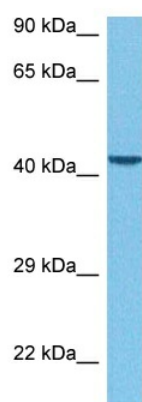
Product data:

Product Type:	Primary Antibodies
Applications:	WB
Reactivity:	Human
Host:	Rabbit
Clonality:	Polyclonal
Immunogen:	The immunogen is a synthetic peptide directed towards the C-terminal region of Human BMP3
Specificity:	Expected reactivity: Human
Formulation:	Liquid. Purified antibody supplied in 1x PBS buffer with 0.09% (w/v) sodium azide and 2% sucrose. <i>Note that this product is shipped as lyophilized powder to China customers.</i>
Concentration:	lot specific
Purification:	Affinity purified
Conjugation:	Unconjugated
Storage:	For short term use, store at 2-8°C up to 1 week. For long term storage, store at -20°C in small aliquots to prevent freeze-thaw cycles.
Stability:	Shelf life: one year from despatch.
Predicted Protein Size:	51 kDa
Gene Name:	bone morphogenetic protein 3
Database Link:	NP_001192.2 Entrez Gene 651 Human P12645
Background:	BMP3 belongs to the transforming growth factor-beta (TGFB) superfamily. Bone morphogenic protein, also known as osteogenin, induces bone formation.
Synonyms:	BMP-3; BMP-3A; Osteogenin



[View online »](#)

Product images:



Host: Rabbit
Target Name: BMP3
Sample Tissue: MCF7 Cell Lysate
Antibody Dilution: 1.0 μ g/ml

WB Suggested Anti-BMP3 antibody Titration: 1
ug/mL
Sample Type: Human MCF7 Whole Cell