

Product datasheet for **TA359591**

ATF7 Rabbit Polyclonal Antibody

Product data:

Product Type:	Primary Antibodies
Applications:	WB
Reactivity:	Human
Host:	Rabbit
Clonality:	Polyclonal
Immunogen:	The immunogen is a synthetic peptide directed towards the middle region of Human ATF7
Specificity:	Expected reactivity: Human
Formulation:	Liquid. Purified antibody supplied in 1x PBS buffer with 0.09% (w/v) sodium azide and 2% sucrose. <i>Note that this product is shipped as lyophilized powder to China customers.</i>
Concentration:	lot specific
Purification:	Affinity Purified
Conjugation:	Unconjugated
Storage:	For short term use, store at 2-8°C up to 1 week. For long term storage, store at -20°C in small aliquots to prevent freeze-thaw cycles.
Stability:	Shelf life: one year from despatch.
Predicted Protein Size:	52kDa
Gene Name:	activating transcription factor 7
Database Link:	Entrez Gene 11016 Human P17544-3



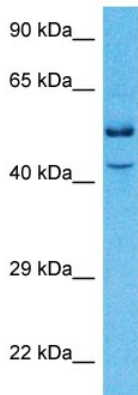
[View online »](#)

Background:

Isoform 5/ATF-4 acts as a negative regulator, inhibiting both ATF2 and ATF7 transcriptional activities. It may exert these effects by sequestering in the cytoplasm the Thr-53 phosphorylating kinase, preventing activation. FUNCTION: Isoform 4/ATF-A0 acts as a dominant repressor of the E-selectin/NF-ELAM1/delta-A promoter. ATF7 Plays important functions in early cell signaling. Binds the cAMP response element (CRE) (consensus: 5'-GTGACGT[AG][AG]-3'), a sequence present in many viral and cellular promoters. Activator of the NF-ELAM1/delta-A site of the E-selectin promoter. Has no intrinsic transcriptional activity, but activates transcription on formation of JUN or FOS heterodimers. Also can bind TRE promoter sequences when heterodimerized with members of the JUN family.

Synonyms:

ATFA; MGC57182

Product images:

Host: Rabbit
Target Name: ATF7
Sample Tissue: Fetal Liver Lysate
Antibody Dilution: 1.0µg/ml

Host: Rabbit
Target Name: ATF7
Sample Type: Fetal Liver lysates
Antibody Dilution: 1.0ug/ml