

## Product datasheet for **TA359589**

### **SERCA2 (ATP2A2) Rabbit Polyclonal Antibody**

#### **Product data:**

Product Type:	Primary Antibodies
Applications:	WB
Reactivity:	Human
Host:	Rabbit
Clonality:	Polyclonal
Immunogen:	The immunogen is a synthetic peptide directed towards the N terminal region of human ATP2A2
Specificity:	<b>Expected reactivity:</b> Human
Formulation:	Liquid. Purified antibody supplied in 1x PBS buffer with 0.09% (w/v) sodium azide and 2% sucrose. <i>Note that this product is shipped as lyophilized powder to China customers.</i>
Concentration:	lot specific
Purification:	Affinity purified
Conjugation:	Unconjugated
Storage:	For short term use, store at 2-8°C up to 1 week. For long term storage, store at -20°C in small aliquots to prevent freeze-thaw cycles.
Stability:	Shelf life: one year from despatch.
Predicted Protein Size:	110 kDa
Gene Name:	ATPase sarcoplasmic/endoplasmic reticulum Ca <sup>2+</sup> transporting 2
Database Link:	<a href="#">NP_001672.1</a> <a href="#">Entrez Gene 488 Human</a> <a href="#">P16615</a>



[View online »](#)

**Background:**

This gene encodes one of the SERCA Ca<sup>2+</sup>-ATPases, which are intracellular pumps located in the sarcoplasmic or endoplasmic reticula of muscle cells. This enzyme catalyzes the hydrolysis of ATP coupled with the translocation of calcium from the cytosol into the sarcoplasmic reticulum lumen, and is involved in regulation of the contraction/relaxation cycle. Mutations in this gene cause Darier-White disease, also known as keratosis follicularis, an autosomal dominant skin disorder characterized by loss of adhesion between epidermal cells and abnormal keratinization. Alternative splicing results in multiple transcript variants encoding different isoforms.

**Synonyms:**

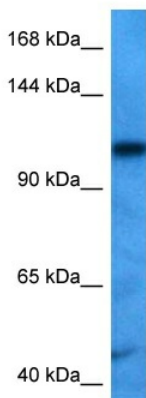
ATP2B; DAR; DD; DKFZp686P0211; FLJ20293; FLJ38063; MGC45367; SERCA2

**Protein Families:**

Druggable Genome, Transmembrane

**Protein Pathways:**

Alzheimer's disease, Arrhythmogenic right ventricular cardiomyopathy (ARVC), Calcium signaling pathway, Cardiac muscle contraction, Dilated cardiomyopathy, Hypertrophic cardiomyopathy (HCM)

**Product images:**

Host: Rabbit  
Target Name: ATP2A2  
Sample Type: HeLa Cell Lysate  
Antibody Dilution: 1.0µg/ml

Host: Rabbit  
Target Name: ATP2A2  
Sample Tissue: Human HeLa Whole Cell lysates  
Antibody Dilution: 1ug/ml