

Product datasheet for **TA359587**

APBB3 Rabbit Polyclonal Antibody

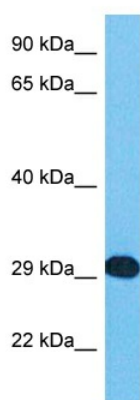
Product data:

Product Type:	Primary Antibodies
Applications:	WB
Reactivity:	Human
Host:	Rabbit
Clonality:	Polyclonal
Immunogen:	The immunogen is a synthetic peptide directed towards the middle region of Human APBB3
Specificity:	Expected reactivity: Human
Formulation:	Liquid. Purified antibody supplied in 1x PBS buffer with 0.09% (w/v) sodium azide and 2% sucrose. <i>Note that this product is shipped as lyophilized powder to China customers.</i>
Concentration:	lot specific
Purification:	Affinity purified
Conjugation:	Unconjugated
Storage:	For short term use, store at 2-8°C up to 1 week. For long term storage, store at -20°C in small aliquots to prevent freeze-thaw cycles.
Stability:	Shelf life: one year from despatch.
Predicted Protein Size:	26 kDa
Gene Name:	amyloid beta precursor protein binding family B member 3
Database Link:	Entrez Gene 10307 Human O95704-6
Background:	The protein encoded by this gene is a member of the APBB protein family. It is found in the cytoplasm and binds to the intracellular domain of the Alzheimer's disease beta-amyloid precursor protein (APP) as well as to other APP-like proteins. It is thought that the protein encoded by this gene may modulate the internalization of APP. Multiple transcript variants encoding several different isoforms have been found for this gene.
Synonyms:	FE65L2; MGC87674; MGC150555; SRA



[View online »](#)

Product images:



Host: Rabbit
Target Name: APBB3
Sample Tissue: 293T Cell Lysate
Antibody Dilution: 1.0 μ g/ml

WB Suggested Anti-APBB3 antibody Titration: 1
ug/mL
Sample Type: Human 293T Whole Cell