

## Product datasheet for **TA359578**

### AGPAT2 Rabbit Polyclonal Antibody

#### Product data:

Product Type:	Primary Antibodies
Applications:	WB
Reactivity:	Human
Host:	Rabbit
Clonality:	Polyclonal
Immunogen:	The immunogen for Anti-AGPAT2 antibody is: synthetic peptide directed towards the middle region of Human PLCB
Specificity:	<b>Expected reactivity:</b> Human
Formulation:	Liquid. Purified antibody supplied in 1x PBS buffer with 0.09% (w/v) sodium azide and 2% sucrose. <i>Note that this product is shipped as lyophilized powder to China customers.</i>
Concentration:	lot specific
Purification:	Affinity purified
Conjugation:	Unconjugated
Storage:	For short term use, store at 2-8°C up to 1 week. For long term storage, store at -20°C in small aliquots to prevent freeze-thaw cycles.
Stability:	Shelf life: one year from despatch.
Predicted Protein Size:	30 kDa
Gene Name:	1-acylglycerol-3-phosphate O-acyltransferase 2
Database Link:	<a href="#">NP_006403.2</a> <a href="#">Entrez Gene 10555 Human</a> <a href="#">O15120</a>



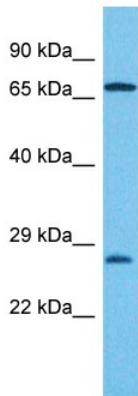
[View online »](#)

**Background:**

This gene encodes a member of the 1-acylglycerol-3-phosphate O-acyltransferase family. The protein is located within the endoplasmic reticulum membrane and converts lysophosphatidic acid to phosphatidic acid, the second step in de novo phospholipid biosynthesis. Mutations in this gene have been associated with congenital generalized lipodystrophy (CGL), or Berardinelli-Seip syndrome, a disease characterized by a near absence of adipose tissue and severe insulin resistance. Alternate transcriptional splice variants, encoding different isoforms, have been characterized.

**Synonyms:**

1-AGPAT2; BSCL; BSCL1; LPAAB; LPAAT-beta

**Product images:**

Host: Rabbit

Target Name: PLCB

Sample Tissue: Fetal Liver Lysate

Antibody Dilution: 1.0µg/ml

WB Suggested Anti-PLCB antibody Titration: 1 ug/mL

Sample Type: Human Fetal Liver