

Product datasheet for **TA359577**

ACAT1 Rabbit Polyclonal Antibody

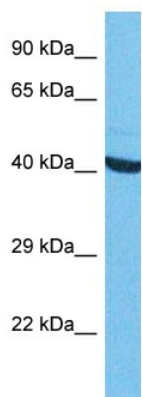
Product data:

Product Type:	Primary Antibodies
Applications:	WB
Reactivity:	Human
Host:	Rabbit
Clonality:	Polyclonal
Immunogen:	The immunogen for Anti-ACAT1 antibody is: synthetic peptide directed towards the middle region of Human THIL
Specificity:	Expected reactivity: Human
Formulation:	Liquid. Purified antibody supplied in 1x PBS buffer with 0.09% (w/v) sodium azide and 2% sucrose. <i>Note that this product is shipped as lyophilized powder to China customers.</i>
Concentration:	lot specific
Purification:	Affinity purified
Conjugation:	Unconjugated
Storage:	For short term use, store at 2-8°C up to 1 week. For long term storage, store at -20°C in small aliquots to prevent freeze-thaw cycles.
Stability:	Shelf life: one year from despatch.
Predicted Protein Size:	46 kDa
Gene Name:	acetyl-CoA acetyltransferase 1
Database Link:	NP_000010.1 Entrez Gene 38 Human P24752
Background:	This gene encodes a mitochondrially localized enzyme that catalyzes the reversible formation of acetoacetyl-CoA from two molecules of acetyl-CoA. Defects in this gene are associated with 3-ketothiolase deficiency, an inborn error of isoleucine catabolism characterized by urinary excretion of 2-methyl-3-hydroxybutyric acid, 2-methylacetoacetic acid, tiglylglycine, and butanone.
Synonyms:	ACAT; MAT; T2; THIL



[View online >](#)

Product images:



Host: Rabbit
Target Name: THIL
Sample Tissue: HepG2 Cell Lysate
Antibody Dilution: 1.0 μ g/ml

WB Suggested Anti-THIL antibody Titration: 1
ug/mL
Sample Type: Human HepG2 Whole Cell