

Product datasheet for **TA359576**

ADAM9 Rabbit Polyclonal Antibody

Product data:

Product Type:	Primary Antibodies
Applications:	WB
Reactivity:	Human
Host:	Rabbit
Clonality:	Polyclonal
Immunogen:	The immunogen is a synthetic peptide directed towards the C-terminal region of Human ADAM9
Specificity:	Expected reactivity: Human
Formulation:	Liquid. Purified antibody supplied in 1x PBS buffer with 0.09% (w/v) sodium azide and 2% sucrose. <i>Note that this product is shipped as lyophilized powder to China customers.</i>
Concentration:	lot specific
Purification:	Affinity purified
Conjugation:	Unconjugated
Storage:	For short term use, store at 2-8°C up to 1 week. For long term storage, store at -20°C in small aliquots to prevent freeze-thaw cycles.
Stability:	Shelf life: one year from despatch.
Predicted Protein Size:	90 kDa
Gene Name:	ADAM metallopeptidase domain 9
Database Link:	NP_003807.1 Entrez Gene 8754 Human Q13443



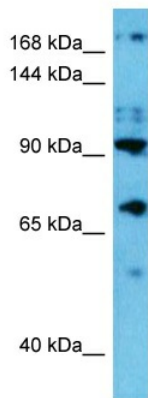
[View online »](#)

Background:

This gene encodes a member of the ADAM (a disintegrin and metalloprotease domain) family. Members of this family are membrane-anchored proteins structurally related to snake venom disintegrins, and have been implicated in a variety of biological processes involving cell-cell and cell-matrix interactions, including fertilization, muscle development, and neurogenesis. The protein encoded by this gene interacts with SH3 domain-containing proteins, binds mitotic arrest deficient 2 beta protein, and is also involved in TPA-induced ectodomain shedding of membrane-anchored heparin-binding EGF-like growth factor. Several alternatively spliced transcript variants have been identified for this gene.

Synonyms:

CORD9; KIAA0021; MCMP; MDC9; Meltrin-gamma; Mltng

Product images:

Host: Rabbit
Target Name: ADAM9
Sample Tissue: PANC1 Cell Lysate
Antibody Dilution: 2.0µg/ml

Host: Rabbit
Target Name: ADAM9
Sample Type: PANC1 Whole Cell
Antibody Dilution: 1.0ug/ml