

## Product datasheet for **TA359572**

### XPA Rabbit Polyclonal Antibody

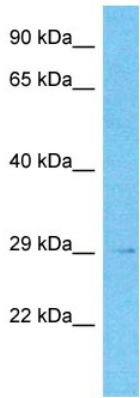
#### Product data:

Product Type:	Primary Antibodies
Applications:	WB
Reactivity:	Human, Mouse
Host:	Rabbit
Clonality:	Polyclonal
Immunogen:	The immunogen is a synthetic peptide directed towards the C-terminal region of Human XPA
Specificity:	<b>Expected reactivity:</b> Human
Formulation:	Liquid. Purified antibody supplied in 1x PBS buffer with 0.09% (w/v) sodium azide and 2% sucrose. <i>Note that this product is shipped as lyophilized powder to China customers.</i>
Concentration:	lot specific
Purification:	Affinity Purified
Conjugation:	Unconjugated
Storage:	For short term use, store at 2-8°C up to 1 week. For long term storage, store at -20°C in small aliquots to prevent freeze-thaw cycles.
Stability:	Shelf life: one year from despatch.
Predicted Protein Size:	30kDa
Gene Name:	XPA, DNA damage recognition and repair factor
Database Link:	<a href="#">NP_000371</a> <a href="#">Entrez Gene 7507 Human</a> <a href="#">P23025</a>
Background:	This gene encodes a zinc finger protein involved in DNA excision repair. The encoded protein is part of the NER (nucleotide excision repair) complex which is responsible for repair of UV radiation-induced photoproducts and DNA adducts induced by chemical carcinogens. Mutations in this gene are associated with xeroderma pigmentosum complementation group A. Alternatively spliced transcript variants have been found for this gene.
Synonyms:	XP1; XPAC



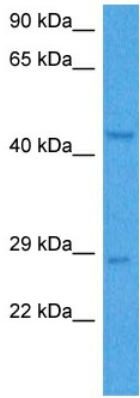
[View online »](#)

Product images:



Host: Rabbit  
 Target Name: XPA  
 Sample Tissue: Fetal Liver Lysate  
 Antibody Dilution: 1.0µg/ml

Host: Rabbit  
 Target Name: XPA  
 Sample Type: Fetal Liver lysates  
 Antibody Dilution: 1.0ug/ml



Host: Rabbit  
 Target Name: Xpa  
 Sample Type: Mouse Liver Lysate  
 Antibody Dilution: 1.0µg/ml

Host: Mouse  
 Target Name: XPA  
 Sample Tissue: Mouse Liver  
 Antibody Dilution: 1ug/ml