

## Product datasheet for **TA359563**

### YL1 (VPS72) Rabbit Polyclonal Antibody

#### Product data:

Product Type:	Primary Antibodies
Applications:	WB
Reactivity:	Human
Host:	Rabbit
Clonality:	Polyclonal
Immunogen:	The immunogen is a synthetic peptide directed towards the N-terminal region of Human VPS72
Specificity:	<b>Expected reactivity:</b> Human
Formulation:	Liquid. Purified antibody supplied in 1x PBS buffer with 0.09% (w/v) sodium azide and 2% sucrose. <i>Note that this product is shipped as lyophilized powder to China customers.</i>
Concentration:	lot specific
Purification:	Affinity purified
Conjugation:	Unconjugated
Storage:	For short term use, store at 2-8°C up to 1 week. For long term storage, store at -20°C in small aliquots to prevent freeze-thaw cycles.
Stability:	Shelf life: one year from despatch.
Predicted Protein Size:	40 kDa
Gene Name:	vacuolar protein sorting 72 homolog
Database Link:	<a href="#">NP_005988.1</a> <a href="#">Entrez Gene 6944 Human</a> <a href="#">Q15906</a>



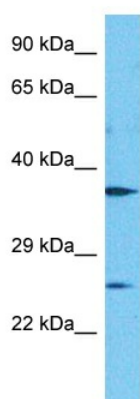
[View online »](#)

**Background:**

The protein encoded by this gene is a shared subunit of two multi-component complexes, the histone acetyltransferase complex TRRAP/TIP60 as well as the chromatin remodeling SRCAP-containing complex. The TRRAP/TIP60 complex acetylates nucleosomal histones important for transcriptional regulation, double strand DNA break repair and apoptosis. The SRCAP-containing complex catalyzes the exchange of histone H2A with the histone variant Htz1 (H2AFZ) into nucleosomes. This protein may be responsible for binding H2AFZ, which has a role in chromosome segregation. This protein may also have a role in regulating long-term hematopoietic stem cell activity. Alternative splicing results in multiple transcript variants that encode different protein isoforms.

**Synonyms:**

CFL1; Swc2; TCFL1; YL-1; YL1

**Product images:**

Host: Rabbit  
Target Name: VPS72  
Sample Tissue: 786-0 Cell Lysate  
Antibody Dilution: 1.0 µg/ml

WB Suggested Anti-VPS72 antibody Titration: 1  
ug/mL  
Sample Type: Human 786-0 Whole Cell