

Product datasheet for **TA359557**

VEGFC Rabbit Polyclonal Antibody

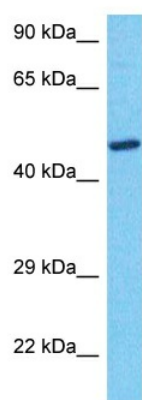
Product data:

Product Type:	Primary Antibodies
Applications:	WB
Reactivity:	Human
Host:	Rabbit
Clonality:	Polyclonal
Immunogen:	The immunogen is a synthetic peptide directed towards the N-terminal region of Human VEGFC
Specificity:	Expected reactivity: Human
Formulation:	Liquid. Purified antibody supplied in 1x PBS buffer with 0.09% (w/v) sodium azide and 2% sucrose. <i>Note that this product is shipped as lyophilized powder to China customers.</i>
Concentration:	lot specific
Purification:	Affinity Purified
Conjugation:	Unconjugated
Storage:	For short term use, store at 2-8°C up to 1 week. For long term storage, store at -20°C in small aliquots to prevent freeze-thaw cycles.
Stability:	Shelf life: one year from despatch.
Predicted Protein Size:	46kDa
Gene Name:	vascular endothelial growth factor C
Database Link:	NP_005420 Entrez Gene 7424 Human P49767
Background:	The protein encoded by this gene is a member of the platelet-derived growth factor/vascular endothelial growth factor (PDGF/VEGF) family. The encoded protein promotes angiogenesis and endothelial cell growth, and can also affect the permeability of blood vessels. The proprotein is further cleaved into a fully processed form that can bind and activate VEGFR-2 and VEGFR-3 receptors.
Synonyms:	Flt4-L; VEGF-C; VRP



[View online »](#)

Product images:



Host: Rabbit
Target Name: VEGFC
Sample Tissue: 786-0 Cell Lysate
Antibody Dilution: 1.0 μ g/ml

Host: Rabbit
Target Name: VEGFC
Sample Type: 786-0 Whole Cell lysates
Antibody Dilution: 1.0 μ g/ml