

## Product datasheet for **TA359554**

### beta II Tubulin (TUBB2A) Rabbit Polyclonal Antibody

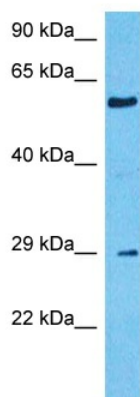
#### Product data:

Product Type:	Primary Antibodies
Applications:	WB
Reactivity:	Human
Host:	Rabbit
Clonality:	Polyclonal
Immunogen:	The immunogen is a synthetic peptide directed towards the C-terminal region of Human TBB2A
Specificity:	<b>Expected reactivity:</b> Human
Formulation:	Liquid. Purified antibody supplied in 1x PBS buffer with 0.09% (w/v) sodium azide and 2% sucrose. <i>Note that this product is shipped as lyophilized powder to China customers.</i>
Concentration:	lot specific
Purification:	Affinity Purified
Conjugation:	Unconjugated
Storage:	For short term use, store at 2-8°C up to 1 week. For long term storage, store at -20°C in small aliquots to prevent freeze-thaw cycles.
Stability:	Shelf life: one year from despatch.
Predicted Protein Size:	48kDa
Gene Name:	tubulin beta 2A class IIa
Database Link:	<a href="#">NP_001060</a> <a href="#">Entrez Gene 7280 Human</a> <a href="#">Q13885</a>
Background:	Microtubules, key participants in processes such as mitosis and intracellular transport, are composed of heterodimers of alpha- and beta-tubulins. The protein encoded by this gene is a beta-tubulin. Defects in this gene are associated with complex cortical dysplasia with other brain malformations-5. Two transcript variants encoding distinct isoforms have been found for this gene.
Synonyms:	dj40E16.7; TUBB; TUBB2; TUBB2B



[View online »](#)

## Product images:



Host: Rabbit  
Target Name: TBB2A  
Sample Tissue: 293T Cell Lysate  
Antibody Dilution: 1.0 $\mu$ g/ml

Host: Rabbit  
Target Name: TBB2A  
Sample Type: 293T Whole Cell lysates  
Antibody Dilution: 1.0 $\mu$ g/ml