

## Product datasheet for **TA359548**

### TBX4 Rabbit Polyclonal Antibody

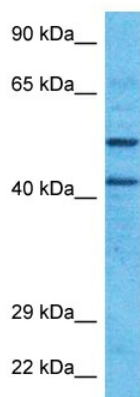
#### Product data:

Product Type:	Primary Antibodies
Applications:	WB
Reactivity:	Human
Host:	Rabbit
Clonality:	Polyclonal
Immunogen:	The immunogen is a synthetic peptide directed towards the C-terminal region of Human TBX4
Specificity:	<b>Expected reactivity:</b> Human
Formulation:	Liquid. Purified antibody supplied in 1x PBS buffer with 0.09% (w/v) sodium azide and 2% sucrose.
Concentration:	lot specific
Purification:	Affinity purified
Conjugation:	Unconjugated
Storage:	For short term use, store at 2-8°C up to 1 week. For long term storage, store at -20°C in small aliquots to prevent freeze-thaw cycles.
Stability:	Shelf life: one year from despatch.
Predicted Protein Size:	59kDa
Gene Name:	T-box 4
Database Link:	<a href="#">Entrez Gene 9496 Human P57082</a>
Background:	This gene is a member of a phylogenetically conserved family of genes that share a common DNA-binding domain, the T-box. T-box genes encode transcription factors involved in the regulation of developmental processes. This gene is the human homolog of mouse Tbx4, which is closely linked to Tbx2 on mouse chromosome 11. Similarly this gene, like TBX2, maps to human chromosome 17. Expression studies in mouse and chicken show that Tbx4 is expressed in developing hindlimb, but not in forelimb buds, suggesting a role for this gene in regulating limb development and specification of limb identity.
Synonyms:	SPS



[View online »](#)

## Product images:



Host: Rabbit  
Target Name: TBX4  
Sample Tissue: HT1080 Cell Lysate  
Antibody Dilution: 1.0 µg/ml

Host: Rabbit  
Target Name: TBX4  
Sample Type: HT1080 Whole Cell lysates  
Antibody Dilution: 1.0ug/ml