

Product datasheet for **TA359543**

SYS1 Rabbit Polyclonal Antibody

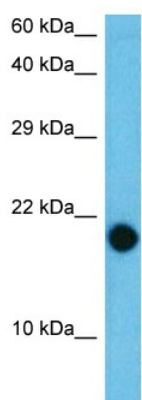
Product data:

Product Type:	Primary Antibodies
Applications:	WB
Reactivity:	Human
Host:	Rabbit
Clonality:	Polyclonal
Immunogen:	The immunogen is a synthetic peptide directed towards the C-terminal region of Human SYS1
Specificity:	Expected reactivity: Human
Formulation:	Liquid. Purified antibody supplied in 1x PBS buffer with 0.09% (w/v) sodium azide and 2% sucrose.
Concentration:	lot specific
Purification:	Affinity purified
Conjugation:	Unconjugated
Storage:	For short term use, store at 2-8°C up to 1 week. For long term storage, store at -20°C in small aliquots to prevent freeze-thaw cycles.
Stability:	Shelf life: one year from despatch.
Predicted Protein Size:	17 kDa
Gene Name:	Sys1 golgi trafficking protein
Database Link:	NP_291020.1 Entrez Gene 90196 Human Q8N2H4
Background:	SYS1 forms a complex with ADP-ribosylation factor-related protein ARFRP1 (MIM 604699) and targets ARFRP1 to the Golgi apparatus.
Synonyms:	C20orf169; dj453C12.4; dj453C12.4.1; OTTHUMP00000031129



[View online »](#)

Product images:



Host: Rabbit
Target Name: SYS1
Sample Tissue: OVCAR-3 Cell Lysate
Antibody Dilution: 1.0 μ g/ml

Host: Rabbit
Target Name: SYS1
Sample Type: OVCAR-3 Whole Cell
Antibody Dilution: 1.0ug/ml