

## Product datasheet for **TA359536**

### SORBS1 Rabbit Polyclonal Antibody

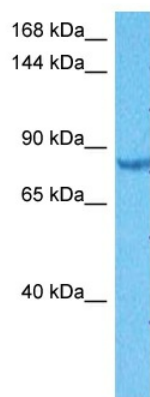
#### Product data:

Product Type:	Primary Antibodies
Applications:	WB
Reactivity:	Human
Host:	Rabbit
Clonality:	Polyclonal
Immunogen:	The immunogen is a synthetic peptide directed towards the middle region of Human SRBS1
Specificity:	<b>Expected reactivity:</b> Human
Formulation:	Liquid. Purified antibody supplied in 1x PBS buffer with 0.09% (w/v) sodium azide and 2% sucrose. <i>Note that this product is shipped as lyophilized powder to China customers.</i>
Concentration:	lot specific
Purification:	Affinity purified
Conjugation:	Unconjugated
Storage:	For short term use, store at 2-8°C up to 1 week. For long term storage, store at -20°C in small aliquots to prevent freeze-thaw cycles.
Stability:	Shelf life: one year from despatch.
Predicted Protein Size:	75kDa
Gene Name:	sorbin and SH3 domain containing 1
Database Link:	<a href="#">XP_006717658</a> <a href="#">Entrez Gene 10580 Human</a> <a href="#">Q9BX66-4</a>
Background:	This gene encodes a CBL-associated protein which functions in the signaling and stimulation of insulin. Mutations in this gene may be associated with human disorders of insulin resistance. Alternative splicing results in multiple transcript variants.
Synonyms:	CAP; DKFZp451C066; DKFZp586P1422; FLAF2; FLJ12406; KIAA0894; KIAA1296; OTTHUMP00000020142; OTTHUMP00000020143; OTTHUMP00000020144; OTTHUMP00000020145; ponsin; R85FL; SH3D5; SH3P12; SORB1



[View online »](#)

## Product images:



Host: Rabbit  
Target Name: SRBS1  
Sample Tissue: 293T Cell Lysate  
Antibody Dilution: 1.0 $\mu$ g/ml

Host: Rabbit  
Target Name: SRBS1  
Sample Tissue: Human 293T Whole Cell  
Antibody Dilution: 1  $\mu$ g/ml