

Product datasheet for TA359532

SLC6A6 Rabbit Polyclonal Antibody

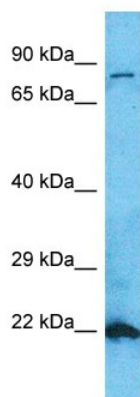
Product data:

Product Type:	Primary Antibodies
Applications:	WB
Reactivity:	Human
Host:	Rabbit
Clonality:	Polyclonal
Immunogen:	The immunogen is a synthetic peptide directed towards the N-terminal region of Human SLC6A6
Specificity:	Expected reactivity: Human
Formulation:	Liquid. Purified antibody supplied in 1x PBS buffer with 0.09% (w/v) sodium azide and 2% sucrose. <i>Note that this product is shipped as lyophilized powder to China customers.</i>
Concentration:	lot specific
Purification:	Affinity Purified
Conjugation:	Unconjugated
Storage:	For short term use, store at 2-8°C up to 1 week. For long term storage, store at -20°C in small aliquots to prevent freeze-thaw cycles.
Stability:	Shelf life: one year from despatch.
Predicted Protein Size:	22kDa
Gene Name:	solute carrier family 6 member 6
Database Link:	Entrez Gene 6533 Human P31641-2
Background:	This gene encodes a multi-pass membrane protein that is a member of a family of sodium and chloride-ion dependent transporters. The encoded protein transports taurine and beta-alanine. There is a pseudogene for this gene on chromosome 21. Alternative splicing results in multiple transcript variants.
Synonyms:	MGC10619; MGC131729; TAUT



[View online »](#)

Product images:



Host: Rabbit
Target Name: SLC6A6
Sample Tissue: Fetal Lung Lysate
Antibody Dilution: 1.0 μ g/ml

Host: Rabbit
Target Name: SC6A6
Sample Type: Fetal Lung lysates
Antibody Dilution: 1.0ug/ml