

Product datasheet for **TA359531**

SND1 Rabbit Polyclonal Antibody

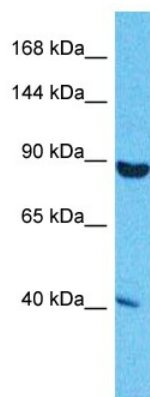
Product data:

Product Type:	Primary Antibodies
Applications:	WB
Reactivity:	Human
Host:	Rabbit
Clonality:	Polyclonal
Immunogen:	The immunogen is a synthetic peptide directed towards the middle region of Human SND1
Specificity:	Expected reactivity: Human
Formulation:	Liquid. Purified antibody supplied in 1x PBS buffer with 0.09% (w/v) sodium azide and 2% sucrose. <i>Note that this product is shipped as lyophilized powder to China customers.</i>
Concentration:	lot specific
Purification:	Affinity Purified
Conjugation:	Unconjugated
Storage:	For short term use, store at 2-8°C up to 1 week. For long term storage, store at -20°C in small aliquots to prevent freeze-thaw cycles.
Stability:	Shelf life: one year from despatch.
Predicted Protein Size:	100kDa
Gene Name:	staphylococcal nuclease and tudor domain containing 1
Database Link:	NP_055205 Entrez Gene 27044 Human Q7KZF4
Background:	SND1 functions as a bridging factor between STAT6 and the basal transcription factor. It plays a role in PIM1 regulation of MYB activity. Functions as a transcriptional coactivator for the Epstein-Barr virus nuclear antigen 2 (EBNA2).
Synonyms:	p100; TDRD11



[View online »](#)

Product images:



Host: Rabbit
Target Name: SND1
Sample Tissue: Hela Cell Lysate
Antibody Dilution: 1.0 μ g/ml

Host: Rabbit
Target Name: SND1
Sample Type: Hela Whole Cell lysates
Antibody Dilution: 1.0ug/ml