

Product datasheet for TA359529

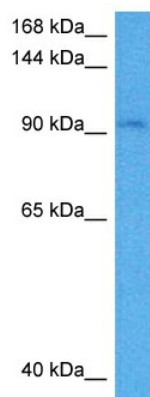
SLC4A4 Rabbit Polyclonal Antibody

Product data:

Product Type:	Primary Antibodies
Applications:	WB
Reactivity:	Human
Host:	Rabbit
Clonality:	Polyclonal
Immunogen:	The immunogen is a synthetic peptide directed towards the N terminal region of human SLC4A4
Specificity:	Expected reactivity: Human
Formulation:	Liquid. Purified antibody supplied in 1x PBS buffer with 0.09% (w/v) sodium azide and 2% sucrose. <i>Note that this product is shipped as lyophilized powder to China customers.</i>
Concentration:	lot specific
Purification:	Affinity purified
Conjugation:	Unconjugated
Storage:	For short term use, store at 2-8°C up to 1 week. For long term storage, store at -20°C in small aliquots to prevent freeze-thaw cycles.
Stability:	Shelf life: one year from despatch.
Predicted Protein Size:	109 kDa
Gene Name:	solute carrier family 4 member 4
Database Link:	NP_001091954.1 Entrez Gene 8671 Human Q9Y6R1-4
Background:	This gene encodes a sodium bicarbonate cotransporter (NBC) involved in the regulation of bicarbonate secretion and absorption and intracellular pH. Mutations in this gene are associated with proximal renal tubular acidosis. Multiple transcript variants encoding different isoforms have been found for this gene.
Synonyms:	DKFZp781H1314; hhNMC; HNBC1; KNBC; kNBC1; NBC; NBC1; NBC2; NBCE1; pNBC; SLC4A5
Protein Families:	Druggable Genome, Transmembrane



[View online »](#)

Product images:

Host: Rabbit
Target Name: SLC4A4
Sample Type: PANC1 Cell Lysate
Antibody Dilution: 1.0 μ g/ml

Host: Rabbit
Target Name: SLC4A4
Sample Tissue: Human PANC1 Whole Cell lysates
Antibody Dilution: 1 μ g/ml