

## Product datasheet for **TA359526**

### SLC35D1 Rabbit Polyclonal Antibody

#### Product data:

Product Type:	Primary Antibodies
Applications:	WB
Reactivity:	Human
Host:	Rabbit
Clonality:	Polyclonal
Immunogen:	The immunogen is a synthetic peptide directed towards the C-terminal region of Human S35D1
Specificity:	<b>Expected reactivity:</b> Human
Formulation:	Liquid. Purified antibody supplied in 1x PBS buffer with 0.09% (w/v) sodium azide and 2% sucrose. <i>Note that this product is shipped as lyophilized powder to China customers.</i>
Concentration:	lot specific
Purification:	Affinity Purified
Conjugation:	Unconjugated
Storage:	For short term use, store at 2-8°C up to 1 week. For long term storage, store at -20°C in small aliquots to prevent freeze-thaw cycles.
Stability:	Shelf life: one year from despatch.
Predicted Protein Size:	39kDa
Gene Name:	solute carrier family 35 member D1
Database Link:	<a href="#">NP_055954</a> <a href="#">Entrez Gene 23169 Human</a> <a href="#">Q9NTN3</a>



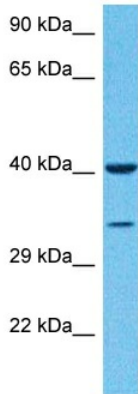
[View online »](#)

**Background:**

Glycosylation of cellular glycoconjugates occurs in the endoplasmic reticulum (ER) and Golgi compartment, and requires transport of nucleotide sugars from the cytosol into the lumen of the ER and Golgi by specific transporters. The protein encoded by this gene resides in the ER, and transports both UDP-glucuronic acid (UDP-GlcA) and UDP-N-acetylgalactosamine (UDP-GalNAc) from the cytoplasm to the ER lumen. It may participate in glucuronidation and/or chondroitin sulfate biosynthesis. Mutations in this gene are associated with Schneckenbecken dysplasia.

**Synonyms:**

KIAA0260; MGC138236; UGTREL7

**Product images:**

Host: Rabbit  
Target Name: SLC35D1  
Sample Tissue: Ovary Tumor Lysate  
Antibody Dilution: 1.0 $\mu$ g/ml

Host: Rabbit  
Target Name: S35D1  
Sample Type: Ovary Tumor lysates  
Antibody Dilution: 1.0 $\mu$ g/ml