

Product datasheet for **TA359523**

SIRT3 Rabbit Polyclonal Antibody

Product data:

Product Type:	Primary Antibodies
Applications:	WB
Reactivity:	Human
Host:	Rabbit
Clonality:	Polyclonal
Immunogen:	The immunogen is a synthetic peptide directed towards the N-terminal region of Human SIR3
Specificity:	Expected reactivity: Human
Formulation:	Liquid. Purified antibody supplied in 1x PBS buffer with 0.09% (w/v) sodium azide and 2% sucrose. <i>Note that this product is shipped as lyophilized powder to China customers.</i>
Concentration:	lot specific
Purification:	Affinity Purified
Conjugation:	Unconjugated
Storage:	For short term use, store at 2-8°C up to 1 week. For long term storage, store at -20°C in small aliquots to prevent freeze-thaw cycles.
Stability:	Shelf life: one year from despatch.
Predicted Protein Size:	43kDa
Gene Name:	sirtuin 3
Database Link:	NP_036371 Entrez Gene 23410 Human Q9NTG7



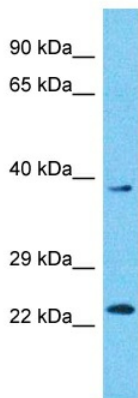
[View online »](#)

Background:

This gene encodes a member of the sirtuin family of proteins, homologs to the yeast Sir2 protein. Members of the sirtuin family are characterized by a sirtuin core domain and grouped into four classes. The functions of human sirtuins have not yet been determined; however, yeast sirtuin proteins are known to regulate epigenetic gene silencing and suppress recombination of rDNA. Studies suggest that the human sirtuins may function as intracellular regulatory proteins with mono-ADP-ribosyltransferase activity. The protein encoded by this gene is included in class I of the sirtuin family. Two alternatively spliced transcript variants that encode different proteins have been described for this gene.

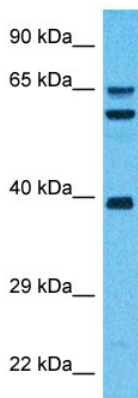
Synonyms:

hSIRT3; SIR2L3

Product images:


Host: Rabbit
 Target Name: SIR3
 Sample Tissue: Fetal Liver Lysate
 Antibody Dilution: 1.0µg/ml

Host: Rabbit
 Target Name: SIR3
 Sample Type: Fetal Liver lysates
 Antibody Dilution: 1ug/ml



Host: Rabbit
 Target Name: SIRT3
 Sample Tissue: HeLa Cell Lysate
 Antibody Dilution: 1.0µg/ml

Host: Rabbit
 Target Name: SIR3
 Sample Type: HeLa Whole Cell lysates
 Antibody Dilution: 1.0ug/ml