

Product datasheet for **TA359517**

SEL1L Rabbit Polyclonal Antibody

Product data:

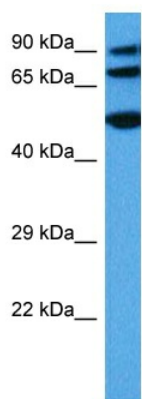
Product Type:	Primary Antibodies
Applications:	WB
Reactivity:	Human
Host:	Rabbit
Clonality:	Polyclonal
Immunogen:	The immunogen is a synthetic peptide directed towards the N terminal region of human SEL1L
Specificity:	Expected reactivity: Human
Formulation:	Liquid. Purified antibody supplied in 1x PBS buffer with 0.09% (w/v) sodium azide and 2% sucrose. <i>Note that this product is shipped as lyophilized powder to China customers.</i>
Concentration:	lot specific
Purification:	Affinity purified
Conjugation:	Unconjugated
Storage:	For short term use, store at 2-8°C up to 1 week. For long term storage, store at -20°C in small aliquots to prevent freeze-thaw cycles.
Stability:	Shelf life: one year from despatch.
Predicted Protein Size:	87 kDa
Gene Name:	SEL1L ERAD E3 ligase adaptor subunit
Database Link:	NP_001231913.1 Entrez Gene 6400 Human Q9UBV2
Background:	The protein encoded by this gene is part of a protein complex required for the retrotranslocation or dislocation of misfolded proteins from the endoplasmic reticulum lumen to the cytosol, where they are degraded by the proteasome in a ubiquitin-dependent manner. Alternatively spliced transcript variants encoding different isoforms have been found for this gene.
Synonyms:	IBD2; PRO1063; Sel-1L; SEL1-LIKE; SEL1L1; TSA305



[View online >](#)

Protein Families: Druggable Genome, Transmembrane

Product images:



Host: Rabbit
Target Name: SEL1L
Sample Type: Esophagus Tumor Lysate
Antibody Dilution: 1.0 μ g/ml

Host: Rabbit
Target Name: SEL1L
Sample Tissue: Human Esophagus Tumor lysates
Antibody Dilution: 1 μ g/ml