

Product datasheet for **TA359510**

RRAGA Rabbit Polyclonal Antibody

Product data:

Product Type:	Primary Antibodies
Applications:	WB
Reactivity:	Human
Host:	Rabbit
Clonality:	Polyclonal
Immunogen:	The immunogen is a synthetic peptide directed towards the C-terminal region of Human RRAGA
Specificity:	Expected reactivity: Human
Formulation:	Liquid. Purified antibody supplied in 1x PBS buffer with 0.09% (w/v) sodium azide and 2% sucrose. <i>Note that this product is shipped as lyophilized powder to China customers.</i>
Concentration:	lot specific
Purification:	Affinity Purified
Conjugation:	Unconjugated
Storage:	For short term use, store at 2-8°C up to 1 week. For long term storage, store at -20°C in small aliquots to prevent freeze-thaw cycles.
Stability:	Shelf life: one year from despatch.
Predicted Protein Size:	34kDa
Gene Name:	Ras related GTP binding A
Database Link:	NP_006561 Entrez Gene 10670 Human Q7L523



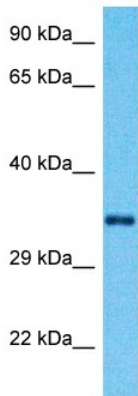
[View online »](#)

Background:

RRAGA is a guanine nucleotide-binding protein forming heterodimeric Rag complexes required for the amino acid-induced relocalization of mTORC1 to the lysosomes and its subsequent activation by the GTPase RHEB. This is a crucial step in the activation of the TOR signaling cascade by amino acids. Involved in the RCC1/Ran-GTPase pathway. It may play a direct role in a TNF-alpha signaling pathway leading to induction of cell death. Also it may alternatively act as a cellular target for adenovirus E3-14.7K, an inhibitor of TNF-alpha functions, thereby affecting cell death.

Synonyms:

FIP-1; FIP1; RAGA

Product images:

Host: Rabbit
Target Name: RRAGA
Sample Tissue: Fetal Lung Lysate
Antibody Dilution: 1.0µg/ml

Host: Rabbit
Target Name: RRAGA
Sample Type: Fetal Lung lysates
Antibody Dilution: 1 ug/ml