

Product datasheet for **TA359504**

RHOBTB3 Rabbit Polyclonal Antibody

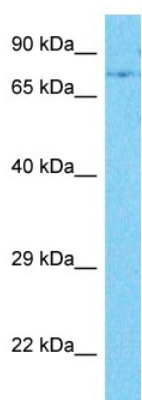
Product data:

Product Type:	Primary Antibodies
Applications:	WB
Reactivity:	Human
Host:	Rabbit
Clonality:	Polyclonal
Immunogen:	The immunogen is a synthetic peptide directed towards the N-terminal region of Human RHBT3
Specificity:	Expected reactivity: Human
Formulation:	Liquid. Purified antibody supplied in 1x PBS buffer with 0.09% (w/v) sodium azide and 2% sucrose.
Concentration:	lot specific
Purification:	Affinity purified
Conjugation:	Unconjugated
Storage:	For short term use, store at 2-8°C up to 1 week. For long term storage, store at -20°C in small aliquots to prevent freeze-thaw cycles.
Stability:	Shelf life: one year from despatch.
Predicted Protein Size:	67kDa
Gene Name:	Rho related BTB domain containing 3
Database Link:	NP_055714 Entrez Gene 22836 Human O94955
Background:	RHOBTB3 is a member of the evolutionarily conserved RHOBTB subfamily of Rho GTPases. For background information on RHOBTBs, see RHOBTB1 (MIM 607351).[supplied by OMIM, Apr 2004]
Synonyms:	KIAA0878



[View online »](#)

Product images:



Host: Rabbit
Target Name: RHBT3
Sample Tissue: MDA-MB-435s Cell Lysate
Antibody Dilution: 1.0µg/ml

Host: Rabbit
Target Name: RHBT3
Sample Type: MDA-MB-435s Whole Cell lysates
Antibody Dilution: 1.0ug/ml