

Product datasheet for **TA359497**

RAB6B Rabbit Polyclonal Antibody

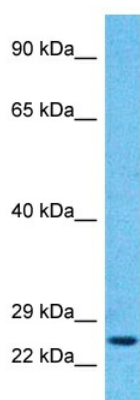
Product data:

Product Type:	Primary Antibodies
Applications:	WB
Reactivity:	Human
Host:	Rabbit
Clonality:	Polyclonal
Immunogen:	The immunogen is a synthetic peptide directed towards the C-terminal region of Human RAB6B
Specificity:	Expected reactivity: Human
Formulation:	Liquid. Purified antibody supplied in 1x PBS buffer with 0.09% (w/v) sodium azide and 2% sucrose.
Concentration:	lot specific
Purification:	Affinity purified
Conjugation:	Unconjugated
Storage:	For short term use, store at 2-8°C up to 1 week. For long term storage, store at -20°C in small aliquots to prevent freeze-thaw cycles.
Stability:	Shelf life: one year from despatch.
Predicted Protein Size:	22kDa
Gene Name:	RAB6B, member RAS oncogene family
Database Link:	NP_057661 Entrez Gene 51560 Human Q9NRW1
Background:	RAB6B seems to have a role in retrograde membrane traffic at the level of the Golgi complex. It may function in retrograde transport in neuronal cells.
Synonyms:	RAB6B



[View online »](#)

Product images:



Host: Rabbit
Target Name: RAB6B
Sample Tissue: HepG2 Cell Lysate
Antibody Dilution: 1.0 μ g/ml

Host: Rabbit
Target Name: RAB6B
Sample Type: HepG2 Whole Cell lysates
Antibody Dilution: 1.0ug/ml